

GROUND CONTROL

Business Satellite Solutions

The One-Touch Mobile Network Access Point (NAP)



One-Touch Users Manual
Ground Control Systems
Update June 29, 2004

QUICKSTART GUIDE



TURNING ON THE SYSTEM & DEPLOYING THE DISH

1. Press the Power Button on the One-Touch and **wait 2-3 minutes** until the moving, searching, and stopped lights stop flashing red. Typically the “Tested”, and “Stowed” lights come on.
2. Press the “Find Satellite” button. The dish will raise up and lock on satellite in 3 to 7 minutes. Once locked on, the local area connection is automatically established and client computers connected to the One-Touch may start using the satellite Internet connection.
3. Occasionally it may be necessary to press the “Find Satellite” button a second time, after the “moving” and “searching” lights stop flashing, to establish client connectivity.

STOWING THE DISH

1. Press the “Stow Dish” button on the One-Touch. The dish will stow automatically. **DO NOT** turn power off until the dish has completely stowed.

TURNING THE SYSTEM OFF

1. Once the dish is stowed, press the power button. It will take about 2 minutes for the One-Touch system to fully turn off.

THINGS TO REMEMBER

If you turn off power to the One-Touch while it is on satellite, it will turn off the NAP (Network Access Point), which means you will not be able to be online.

INTRODUCTION

The One-Touch Mobile system from Ground Control makes getting online from any parked location as easy as pressing a button. The system is comprised of the Direcway Modems, the Satellite Dish Main Controller and the Ground Control Network Access Point. Besides the onboard fans that keep the system cool, there are no moving parts such as a hard drive. The One-Touch is built for mobile travel.

Since the One-Touch creates a standard TCP-IP Local Area Network, you may connect any type of client computer to it.

This guide assumes your One-Touch system has been correctly installed by a certified Ground Control Mobile installer.

THE FRONT PANEL

The One-Touch front panel has several indicators on it as well as the 4 buttons the run the entire system.





Starting from the bottom left... the buttons are:

POWER – Turn on and off power to the One-Touch

FIND SATELLITE – Will deploy the stowed satellite dish and have it lock on satellite and create a local area network.

STOW DISH – When the dish is raised, this button is pressed to stow the dish.

STOP – Press this button to completely stop the dish from moving. This is an “emergency stop” button.

There are 6 indicators on the front panel:

MOVING – After the system boots, this light will turn on when the dish is moving.

SEARCHING – This light comes on when the dish has come close to finding the satellite in orbit... it will begin scanning (or searching) the sky.

STOWED – This light is on when the dish is stowed.

ON SIGNAL – Lights up when the dish has found the Direcway Satellite.

TESTED – This shows the dish has run a “Test Dish” procedure which means the dish has moved all three axis (Elevation, Azimuth and Skew) through their full range. This is normally done during installation. If power is lost, sometimes the dish will automatically begin a new test dish sequence, which takes about 10 minutes.

TX ENABLED – (Transmitter Enabled) The system has been aligned (cross poled) and fully turned on. This light shows that you may begin surfing the Internet.



On top of the panel, the **LNB** light means that the Direcway Modems are turned on (in this case they are off). The **DATA** light blinks red when there is communication between the One-Touch and the Dish on the roof. The **DISH** light blinks for every 10th motor revolution made while the dish is moving.



The RX Modem (receive) and the TX Modem (transmit) are windows that show the Direcway Modem status. Note that each window has two lights in it. The lights blink before getting online. Once online, the right side lights of each modem stay a constant green. The left lights for both RX and TX rapidly blink only when you are transmitting or receiving data.

CREATING A NETWORK

On the back of the One-Touch is a single Ethernet connection that you may use as the gateway for your Internet connection. If you wish to connect more than one computer, you will need to purchase an inexpensive Hub or Switch from any computer store, and have cables that run from the hub to the One-Touch, and then to all client computers.



The Linksys Hub is a common product that sells for about \$50

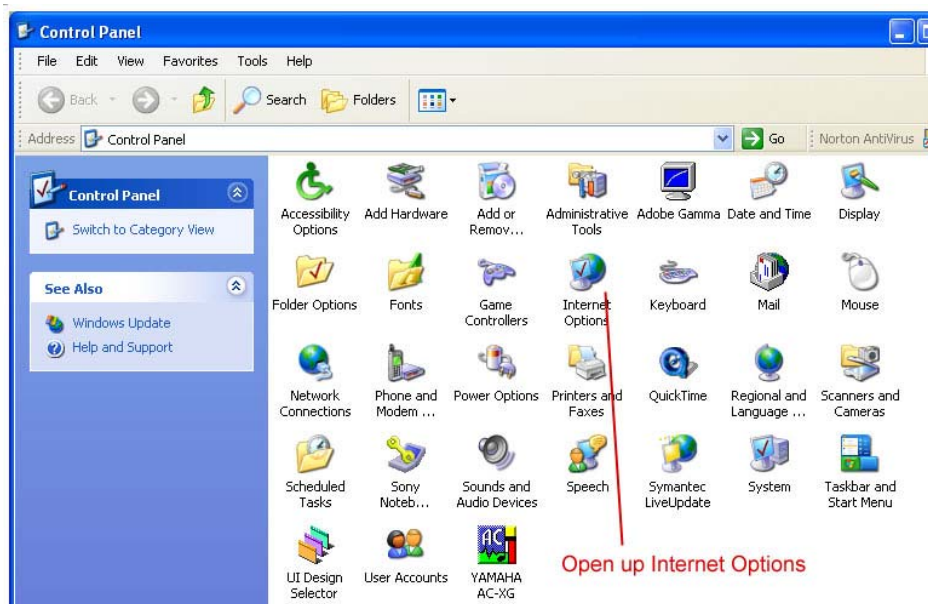
Ground Control provides one CROSSOVER network cable that ships with your One-Touch. This cable allows a single computer to connect directly to the One-Touch. Do not use this network cable if you are using a HUB or Switch. The Crossover cable only works as a direct connection from the One-Touch to a single computer.

OPTIMIZING A CLIENT PC COMPUTER

If you are running Microsoft Windows 2000 or XP, you will want to optimize your client computers (the computer connected to the One-Touch) so that your download speeds are about twice as fast.

Configure the Proxy Setting in Internet Explorer

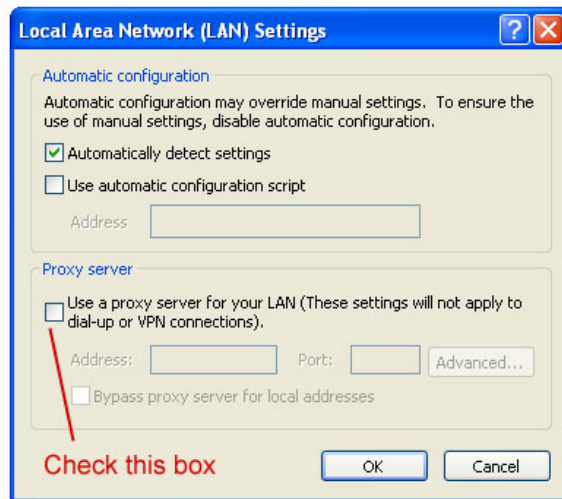
1. Click on Start and then open the Control Panel.
2. Open Internet Options.



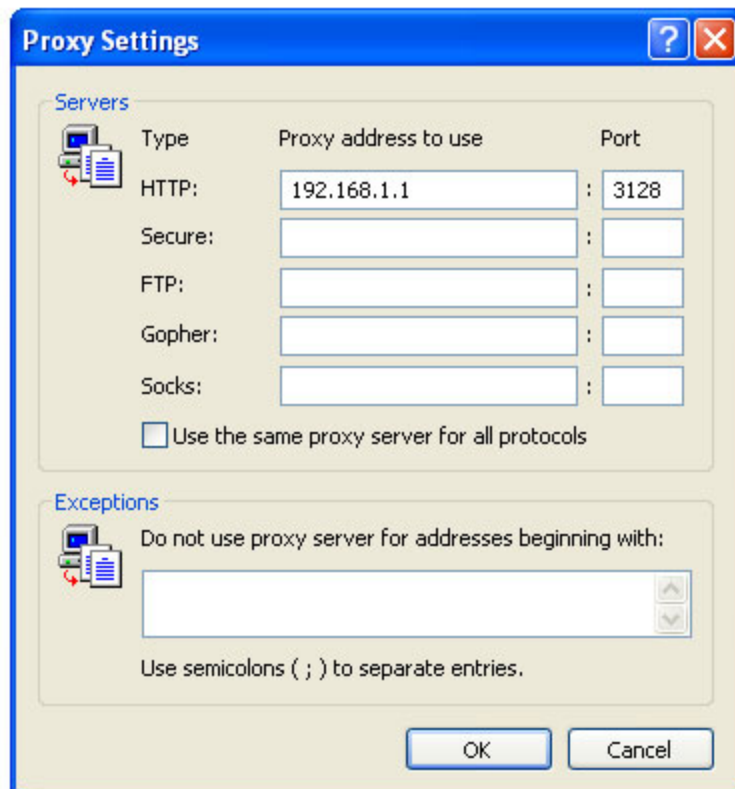


Click on Connections Tab to bring up this screen

Click on LAN Settings to bring up the next window.



Check the box next to “Use Proxy Server for your LAN”, then click the Advanced button on the same screen. On the next page is the Advanced “Proxy Settings” screen.



Type **192.168.1.1** next to HTTP: for the Proxy address and then type **3128** for the Port as shown above. Click OK, and click OK again, then click OK a third time to close all screens.

When you open Internet Explorer, you should see a definite decrease in the time to load a webpage.

Update the Registry File

Next trick is an easy speed tweak that Ground Control highly recommends for your satellite connection.

1. While online, go to www.groundcontrol.com and click on the “Downloads” button on this page. Then click on the large “Direcway Software” button on this page. You will see a listing of software to download. You’re looking for DirecWay Registry Speed Tweak.
2. Download the registry tweak for XP or 2000 to your computer.
3. It will be zipped so you will want to extract the registry file (In XP, double click on the downloaded file and it will open as a folder. You can then copy it to the desktop or another location. In Win 2000 you will need a third-party program to extract the file. To run the program, simply double click on it. This will add the registry settings to the computer.

4. Reboot the computer so the registry change will take affect.
5. Open Internet Explorer... Again, you should see a definite decrease in the time to load a webpage.

You may quickly and easily connect any type of TCP-IP based computer to the One-Touch system and they may start using the Internet Connection immediately. If you own a PC, you will want to optimize the connection with the below instructions.

MANUAL CONTROL OF THE ONE-TOUCH

The One-Touch is a Windows XP Embedded computer and you may log into this computer using Remote Desktop Connection.

From any client computer connected to the One-Touch, click on Start, then Programs, then Accessories, then Communications, then “Remote Desktop Connection”.

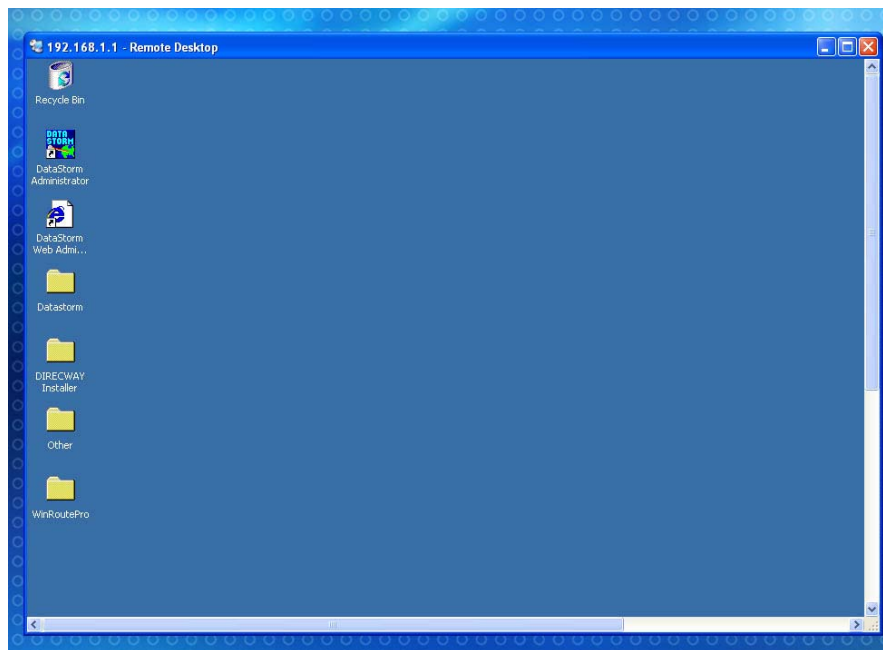


Please enter **192.168.1.1** and then press on connect. The following screen will appear.

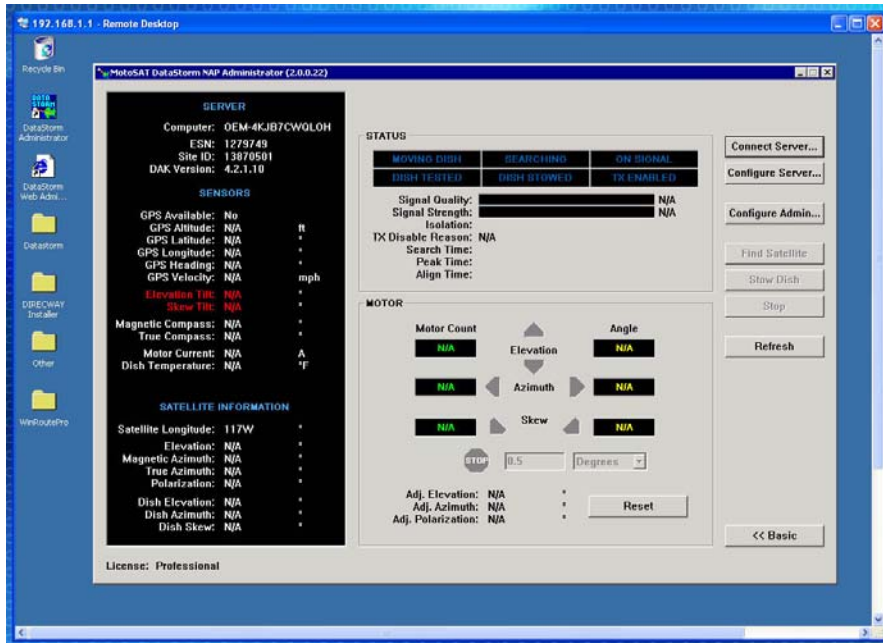


Under user name, type in **administrator**
In the password, type **gcnap**

In about 10 to 20 seconds, your client computer will show the desktop of the One-Touch.



From here, you may run the Mobile System software by clicking on the Administrator icon. The Mobile Satellite Software window will appear.



For information on the operations of the mobile software, please review the Operations Manual that shipped with your system.

TECHNICAL SUPPORT

Having problems? Please call Ground Control Technical Support toll free at 1-800-931-5559.

WIRING DIAGRAM FOR ONE-TOUCH

