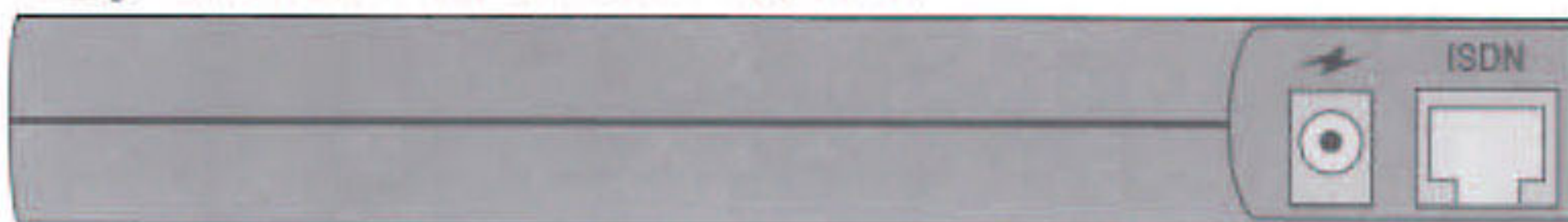
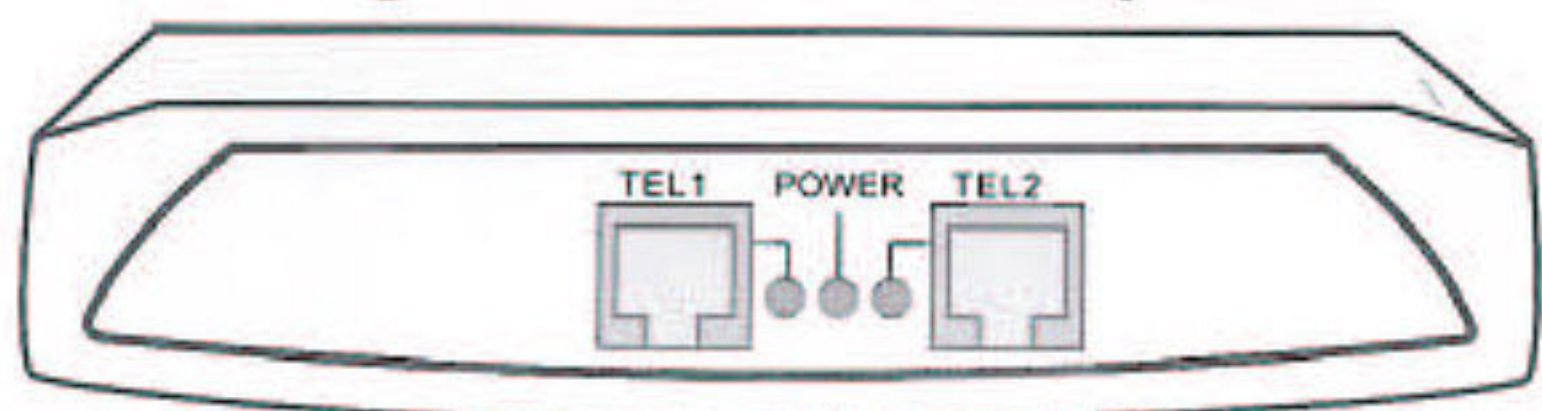




Hughes 9201 BGAN terminal unit

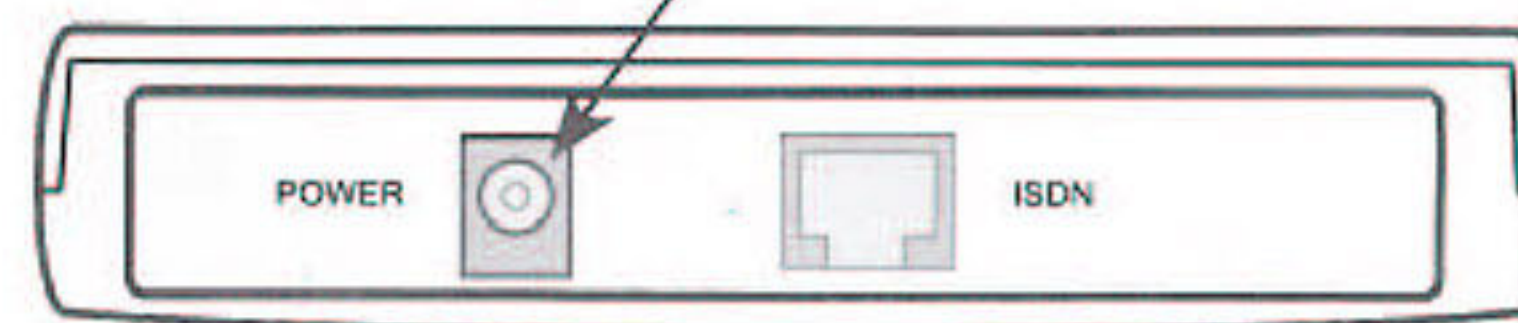


Hughes Terminal Adapter



FRONT PANEL

External power is not necessary if plugging into BGAN Terminal



REAR PANEL

Analogue telephone (DTMF)



Group 3 telefax



The Hughes Terminal adapter provides two 2-wire analogue RJ-11 connectors marked Tel1 and Tel2. Tel1 is a POTS line (Plain Old Telephone) and Tel2 is a Group 3 FAX line. When the terminal adapter is connected to the BGAN 9201 ISDN port via a standard (RJ-45 Ethernet), no external power is required.

Tel1 and Tel2 have a standard dial-tone and each line is issued a unique phone number for placing or receiving calls. Only one phone line may be used at any time.

The Terminal Adapter has advanced features for changing analogue 3.1kHz (64kbps) voice, fax or data. For more information, please refer to the Hughes user manual.