

Using the IP Setup Utility for Mac

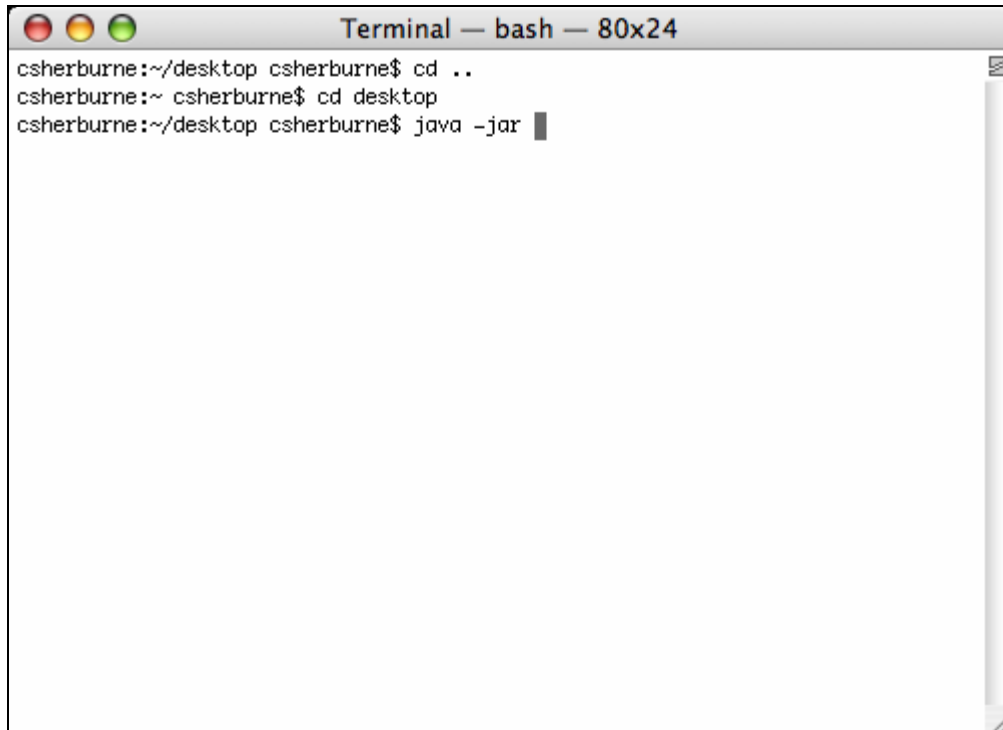
How to change the IP Addresses:

Download the MSS Software Update from <http://www.groundcontrol.com/mss>

Unzip the zip file.

Open a terminal window by going to Applications -> Utilities -> Terminal.

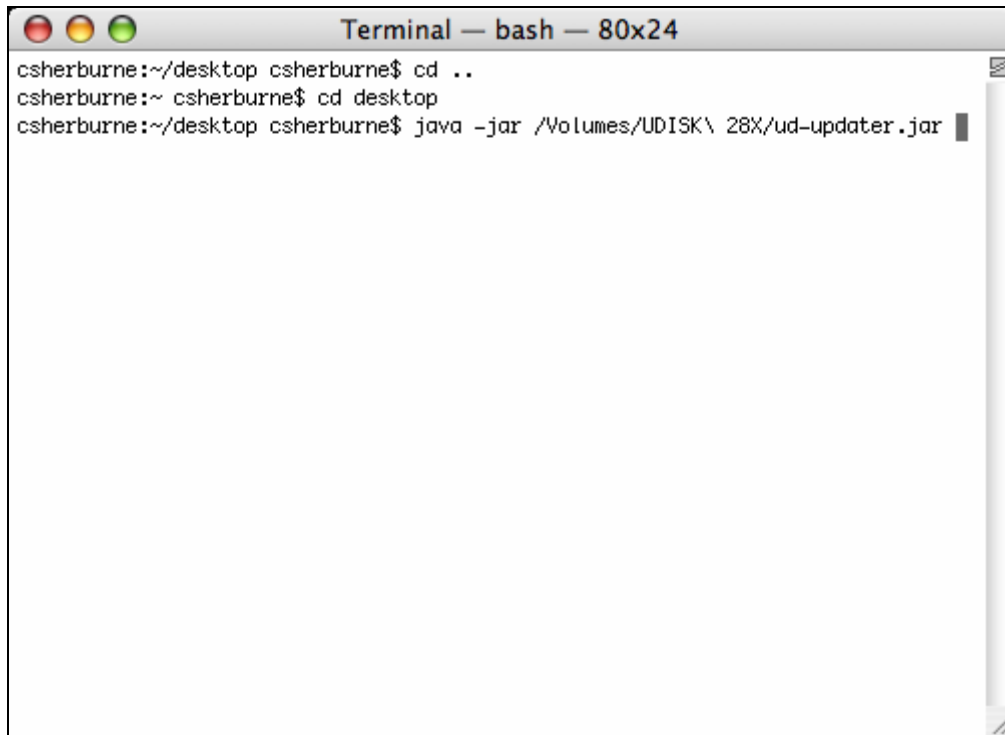
Type **java -jar** on the command line. Make sure you put a space the end of the command.

A screenshot of a Mac Terminal window. The title bar reads "Terminal — bash — 80x24". The terminal content shows the following commands and their outputs:

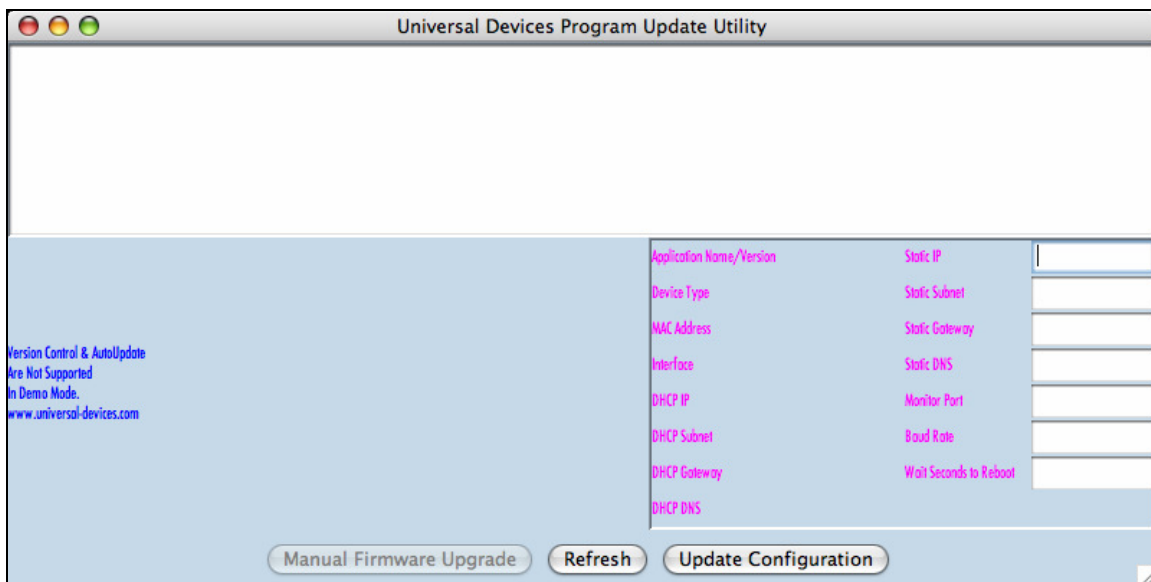
```
csherburne:~/desktop csherburne$ cd ..  
csherburne:~ csherburne$ cd desktop  
csherburne:~/desktop csherburne$ java -jar █
```

The cursor is positioned at the end of the third line, ready for the next command.

Drag the file ud-updater.jar to the Terminal window. Hit Return.

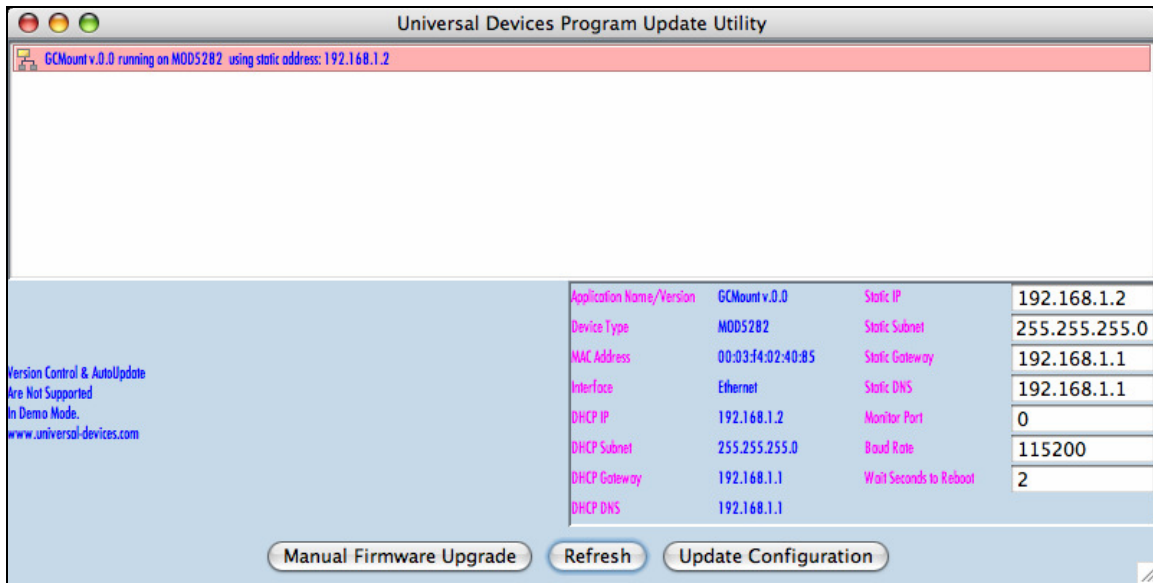


Click Refresh. Make sure a device shows up in the top part of the window. If there is no device listed, as in the picture below, check your link lights on your router and make sure everything is connected correctly.



Power cycle everything and run the updater again.

Notice the device GCMount is listed in the top part of the window.



Change the IP settings to the following:

Static IP	192.168.1.2
Static Subnet	255.255.255.0
Static Gateway	192.168.1.1
Static DNS	192.168.1.1
Monitor Port	0
Baud Rate	115200
Wait Seconds to Reboot	2

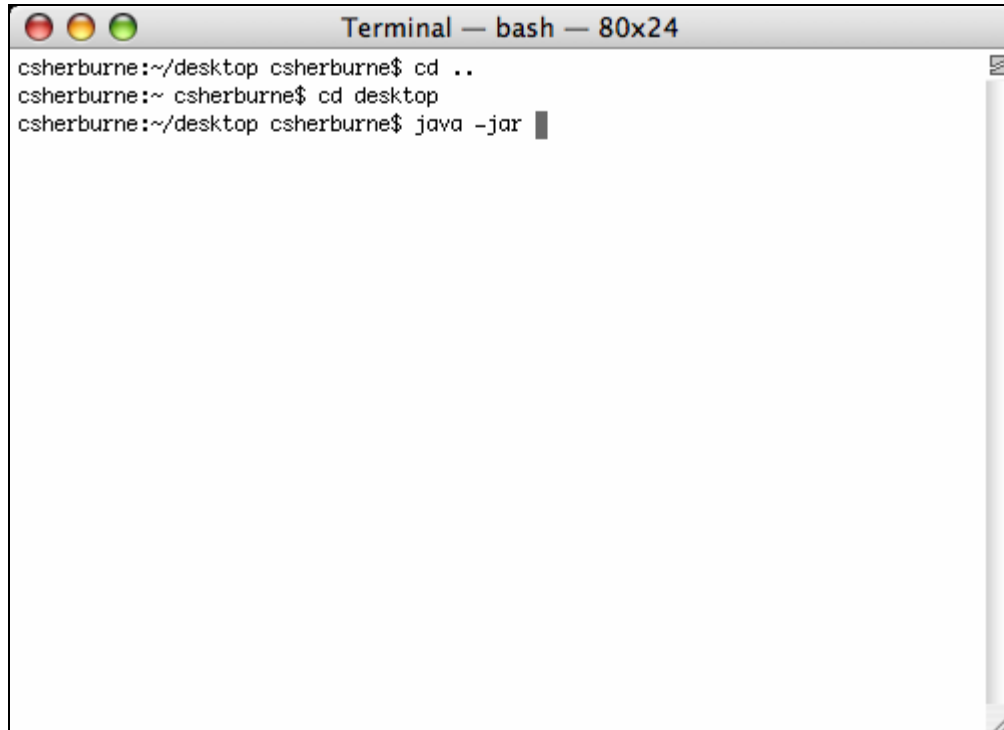
Click Update Configuration. Wait 30 seconds for the unit to reboot.
Click Refresh to verify that the IP settings were changed.

How to update the MSS Software:

Download the MSS Software Update from <http://www.groundcontrol.com/mss>
Unzip the zip file.

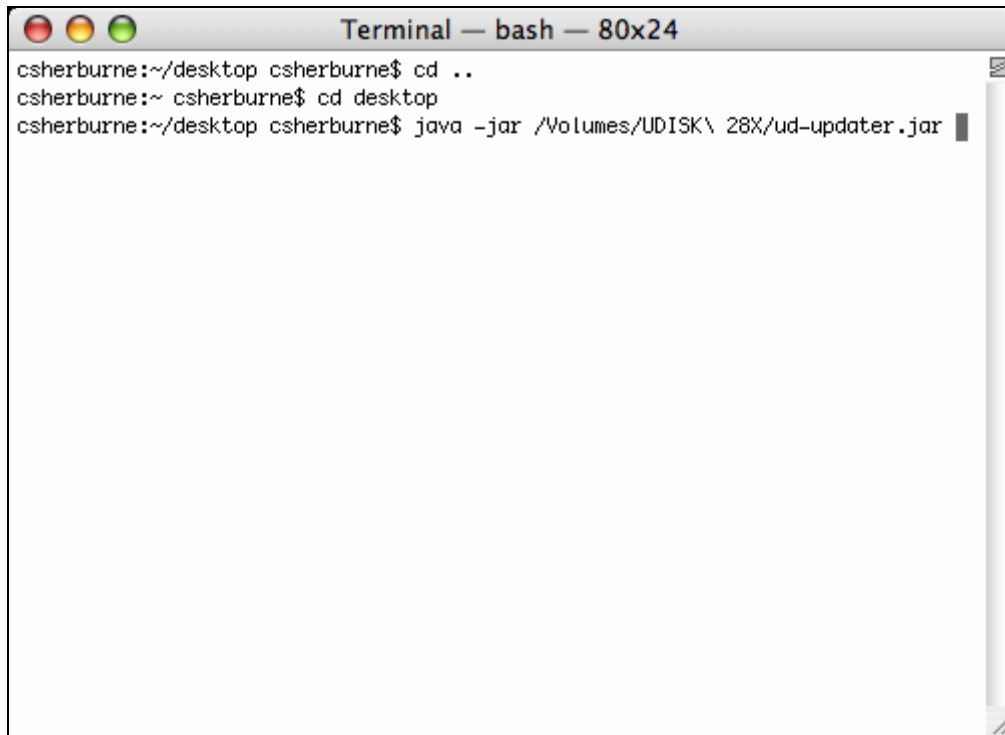
Open a terminal window by going to Applications -> Utilities -> Terminal.

Type **java -jar** on the command line. Make sure you put a space the end of the command.

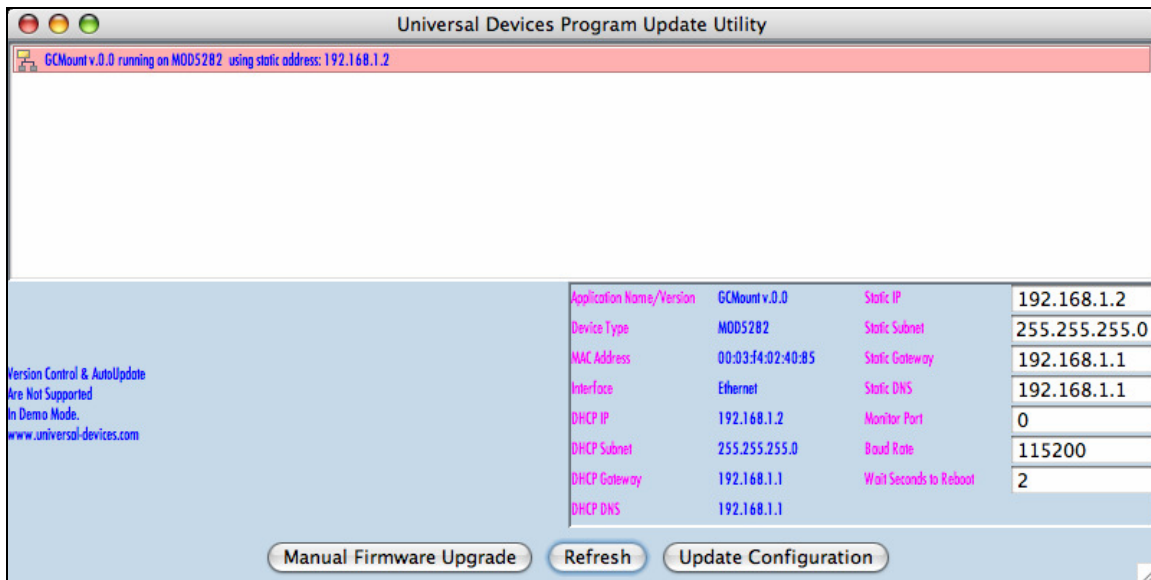
A screenshot of a macOS Terminal window. The title bar reads "Terminal — bash — 80x24". The window contains three lines of text: "csherburne:~/desktop csherburne\$ cd ..", "csherburne:~ csherburne\$ cd desktop", and "csherburne:~/desktop csherburne\$ java -jar █". The cursor is at the end of the third line.

```
Terminal — bash — 80x24
csherburne:~/desktop csherburne$ cd ..
csherburne:~ csherburne$ cd desktop
csherburne:~/desktop csherburne$ java -jar █
```

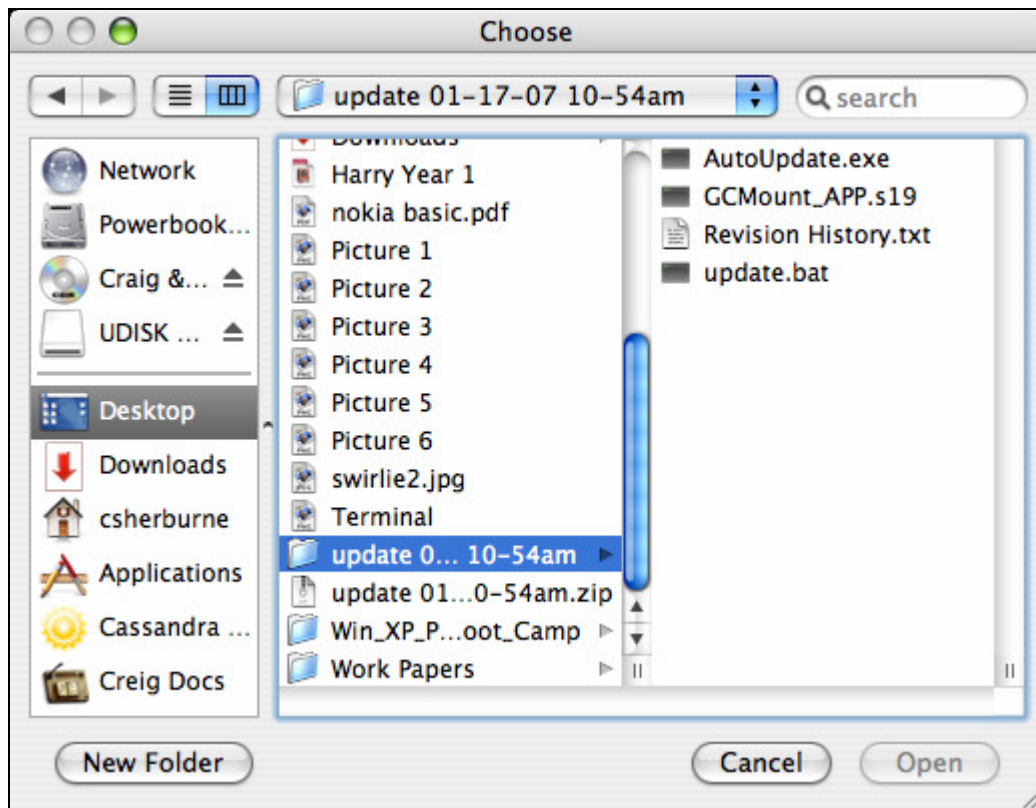
Drag the file ud-updater.jar to the Terminal window. Hit Return.



Click Manual Firmware Upgrade.



Browse to the directory with the update that you just unzipped.

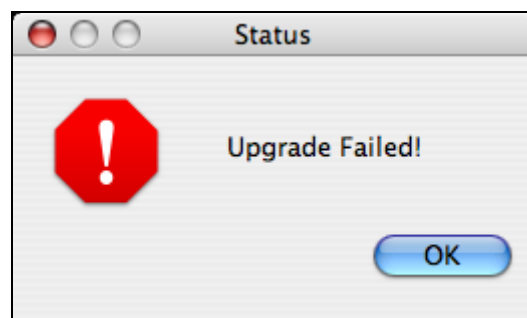


Select GCMount_APP.s19.

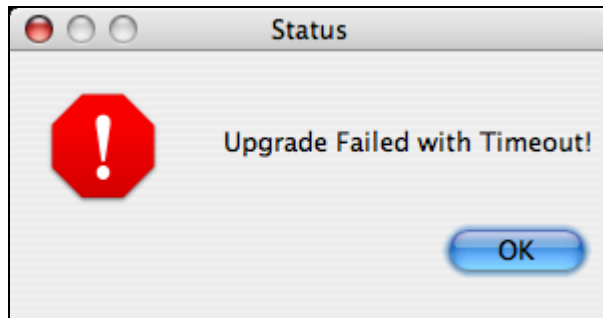
Click Open.

After clicking Open, it will update the firmware. After this, it is normal for two errors to pop up. The update could still succeed even if the two errors pop up.

When the Status says "Upgrade Failed", Click OK.



When the Status dialog box says "Upgrade Failed with Timeout!", Click OK.



Now check to see if the update succeeded by going to <http://192.168.1.2>

Read the version from the Main page. It is the fourth line down under Status in the middle of the page. Verify that the version there matches the version of the software you just installed. If it matches, then the update succeeded.

A screenshot of a web browser displaying the "Ground Control" website. The browser's address bar shows "http://192.168.1.2/INDEX.HTM". Below the browser window, a status bar displays: "SIGNAL QUALITY: 0 Rx: 0.0", "AZ: 193.5 EL: 95.3 SK: 0.2", and "Status: No Modems Found, Retrying for 150 Seconds". The main content area features the "GROUND CONTROL" logo and a navigation menu with "Main Page", "Tachyon Modems", "Compass Calibration", "Setup Screen", and "Manual Control". The "Main Page" is selected. The page is divided into several sections: "INPUT DATA" (with "GPS Not Acquired" in red), "CALCULATED SKY POSITION", and "STATUS". The "STATUS" section contains: "Tx Es/N0: 0.0", "Rx Eb/N0: 0.0", "SERIAL #: 10517", and "FIRMWARE VER: 01-17-07 10-54am", which is circled in red. At the bottom are buttons for "FIND SATELLITE", "STOW DISH", and "STOP". A sidebar on the right contains a "Main Page" heading and explanatory text about GPS signal acquisition, along with links for "View Help Topics" and "History".