

wideyeTM

liberating communications

SAFARITM

SAFARITM 10

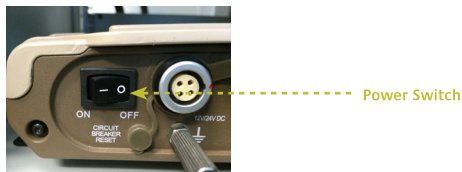
**Quick Start
Guide:
Getting
Started**

P/N 74B00127101

Powering Up Transceiver Unit

Follow this step to power ON the Transceiver Unit

1. Toggle the Power Switch to the left to power ON.




Follow this step to power OFF the Transceiver Unit

1. Toggle the Power Switch to the right to power OFF.

Making a voice call

When all 3 Status LED indicators on the Transceiver Unit are steady green, it is ready to make and receive calls.

To make a call from the Primary Handset, dial 00 <country code> <phone number> followed the  key.

Note: For international calls and SMS, press and hold the * + key until '+' is displayed, then enter <country code> and <phone number> without using the leading "00".

To end the call, press  on the Primary Handset.

To accept an incoming call, press  on the Primary Handset.

To make a call from an analog phone (optional) connected to the SAFARI Transceiver Unit dial, 00 <country code> <phone number> followed by the # key.

CAUTION: PLEASE MAKE SURE THAT YOU SET UP A SECURITY PASSWORD (WEP KEY) TO ENSURE THAT THERE ARE NO UNAUTHORISED USERS ACCESSING THE WI-FI CONNECTION. PLEASE REFER TO THE LAST PAGE OF THIS BOOKLET FOR THE WI-FI SECURITY SETTINGS.

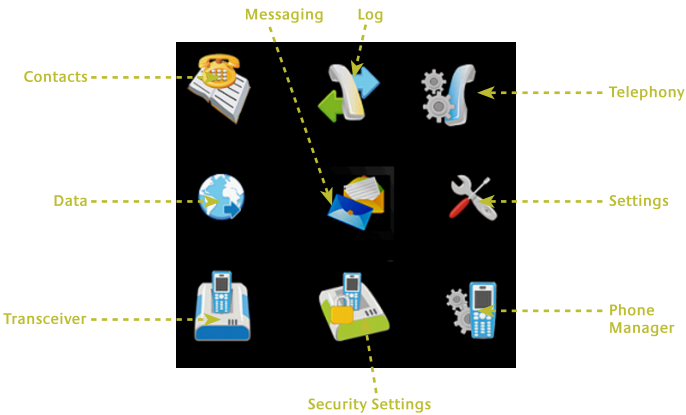
Sending a SMS (Message)



Follow these steps to send the first SMS:

- 1. Press  to select Menu



The Menu selection screen will be displayed on the Primary Handset screen.




- 2. Using the 4-way navigation ring, navigate to the Messaging  icon.
- 3. Press  to confirm selection.

The SMS editor will be displayed on the Primary Handset screen.

- 4. Type in your SMS message using the Primary Handset alphanumeric keypad.

Tips for writing text:

- To add a space, press the 0 key.
- To quickly change the text input method when writing text, press  repeatedly and check the indicator at the top of the display:

<ABC> : Capital letters


<123> : Numbers

<abc> : Small letters

<Abc> : Initial Capital letter followed by small letters

- To add a number, press and hold the desired number key.

Insert symbols to your message:

- To get a list of special symbols, press *+.
- Using the 4-way navigation ring, navigate to the desired symbol.
- Press  to confirm selection

Clearing text:

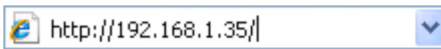
- To clear text, press once to clear one character at a time.
- To clear the whole text entry, press and hold C to clear the whole text entry.

Making a data connection

Note: For the LAN (Local Area Network) interface to work without any further setup, the computer must be set up to obtain an IP address and a DNS server address automatically.

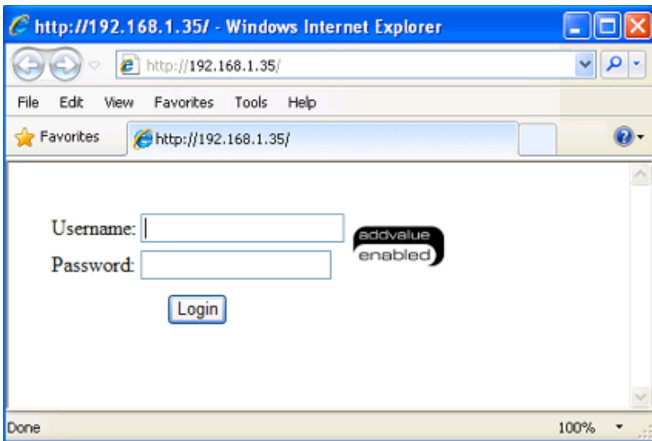
Follow these steps to connect a computer to the Transceiver Unit:

1. Connect your LAN cable between the network connector on your computer and the first LAN port on the Transceiver Unit.
2. Power up your computer.
3. Start your Internet browser.
4. Type **http://192.168.1.35** in the Address field and press **Enter**.



The Login screen appears.

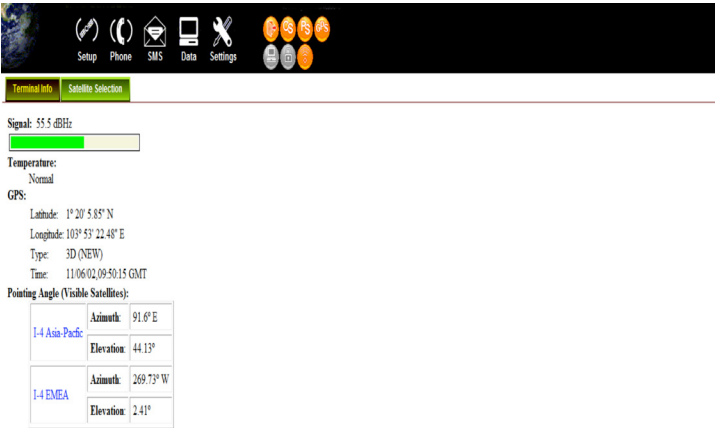
5. Type in **admin** in the **Username** field and **1234** in the **Password** field. Click **Login**.



Note: “1234” is the default password for “admin”.

When the C10 feature is activated, the Transceiver Unit can work with either Class 11 or Class 10 Antenna Unit. An activation PIN is required to activate the C10 feature, please contact your DP for assistance. Please note that if the Transceiver Unit is connected to the Class 11 Antenna Unit, the WebConsole will show the SAFARI™ WebConsole. However if the Transceiver Unit is connected to the Class 10 Antenna Unit, the WebConsole will show the SAFARI™ 10 WebConsole.

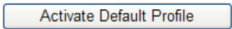
The SAFARI™ Web Console will be shown. The Transceiver Unit will proceed automatically to “Checking PIN status” followed by “Antenna pointing” and then registering to the network (upon power on).



6. Click on  **Data**. On the Data menu, select  **Connection**



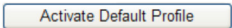
No connection exists



7. Click on **Activate Default Profile**. The default data connection (PDP context) will be activated. When connected, APN and IP Address details will be displayed. You may now browse the Internet, do file transfer (FTP) or run any IP based applications services.



No connection exists



Follow these steps to disconnect the data connection:

1. Click Disconnect ([Disconnect \(Standard\)](#)) to deactivated the data connection (PDP context). The PDP context will be deactivated.



globe.bgan.inmarsat.com - 172.16.24.205 [Disconnect \(Standard\)](#)

Wi-Fi Security Settings

Follow the steps to configure the security settings of the Wi-Fi module.

1. Select the security mode and authentication key.

Note: There are four sets of security passwords available for your security configuration and you can only select one set of password.

2. Select the default key to enable the desire password from either “Key 1” to “Key 4” respectively.

A screenshot of the "Wi-Fi Security Settings" page. At the top is a black header bar with icons for Setup, Phone, SMS, Data, and Settings, followed by a row of service icons (Globe, CS, PS, DS, etc.). Below the header is a green navigation bar with tabs: Language, Terminal Info, Ethernet, Telephony, PIN, SMS, **Wi-Fi**, Admin, Support, Accounts, and About. The main content area has a left sidebar with "System Info", "Wireless Settings", and "Security Settings" (highlighted in blue). The "Security Settings" section contains: "Security Mode:" with a dropdown menu showing "WEP"; "Authentication Type:" with a dropdown menu showing "Open Key"; "Default Key:" with a dropdown menu showing "1"; and four input fields labeled "Key 1:", "Key 2:", "Key 3:", and "Key 4:". The "Key 1" field contains the hex string "12345678901234567890123456". Below these fields is an "Update" button. At the bottom, there is a "WEP Key Instructions:" section with the text: "Enter 10 hex characters for 40/64 bits security.", "Enter 26 hex character for 108/128 bits security.", and "Valid hex characters are digit 0 through 9 and letters A through F." In the bottom right corner, there is a small black box with the text "activation enabled".

