

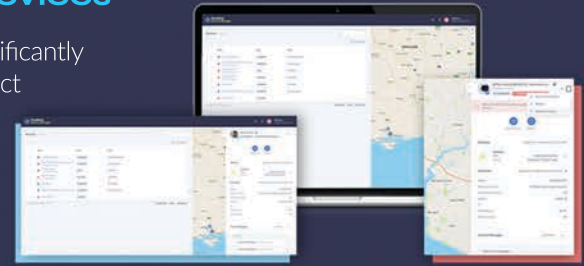
Cloudloop Device Manager



Monitor, Maintain and Troubleshoot Your Remote Devices

Cloudloop Device Manager (CDM) is a secure, cloud hosted, solution designed to significantly reduce the cost of managing remote satellite communications assets. It provides a direct connection to device status information and management tools via an easy to navigate web user interface.

IoT / M2M customers can remotely access, diagnose and manage the functionality of devices deployed in hard-to-reach, or physically dangerous locations using a laptop or any other connected device from the comfort of their office.

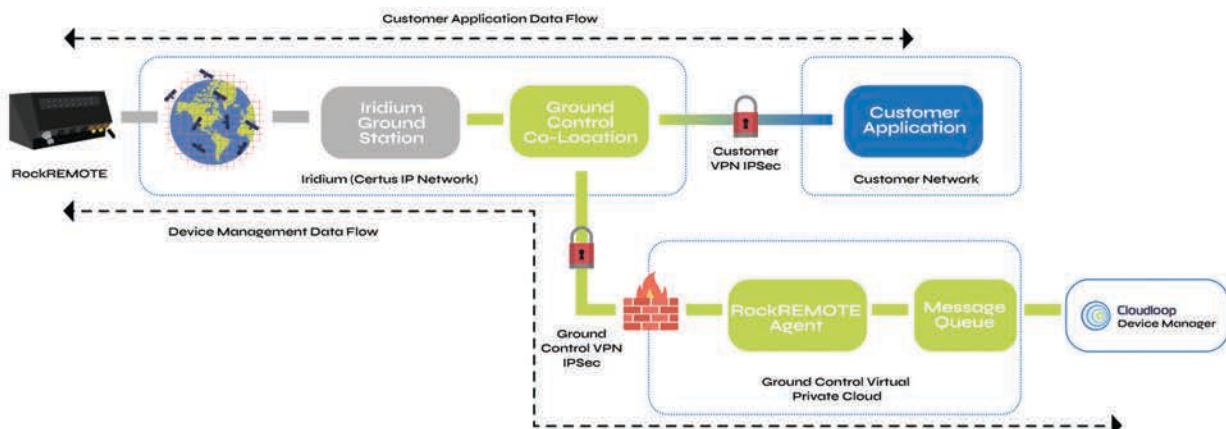


Key features

- Monitor the health status of your remote device(s) and get up-to-date, essential, device information
- Create custom device connection alerts and notifications
- Access service and system logs to enable remote troubleshooting
- Initiate basic command functions
- Complete Over The Air (OTA) software updates
- Reduces cost of remote satellite asset management by reducing the need for engineer visits to remote locations

Keeping your data secure

Combined with the Ground Control Delivery Network, CDM provides a truly secure connection to devices, properly segregating communications data from device information while providing unparalleled insight into deployed devices.



Part of the Cloudloop ecosystem

Part of the Cloudloop services suite, Device Manager combines device and subscription data to provide a rich view of remote devices without needing to send an engineer to site. Click-through from each device to:

- Manage the activation, deactivation, and suspension of your subscribed devices
- View real time and historical usage data
- View and manage billing of your services
- Create custom alerts for usage and expenditure
- Monitor your communications in real time

Devices that can be managed in CDM

All BGAN and BGAN M2M devices, plus the Iridium Certus 100-enabled RockREMOTE.



• Explorer 510



• Explorer 540



• Explorer 710



• Hughes 9502



• Hughes 9202

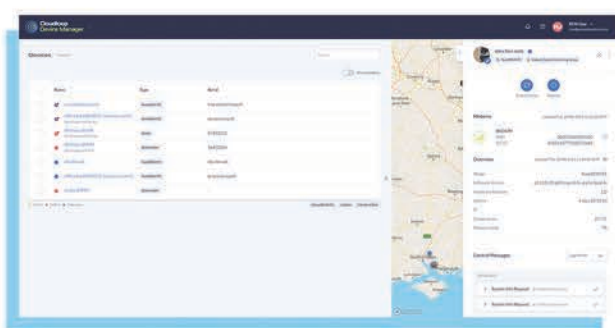
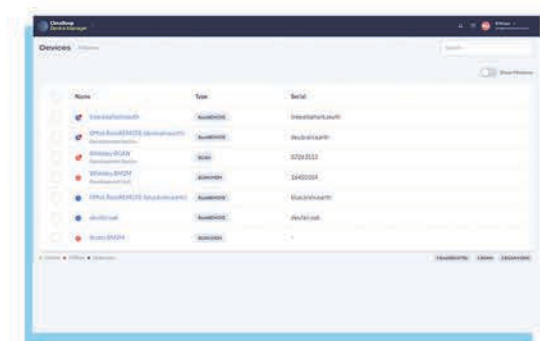


• RockREMOTE

	Iridium Certus 100	BGAN M2M	BGAN
Connection Method			
Out of Band	IMT	SMS	SMS
Direct IP	✓	✓	✓
Monitoring & Alerts			
Traffic Monitoring & Alerts	✓	✓	✓
Set & Update Location	✓	✓	✓
System Information			
Device System Information	✓	✓	✓
Satellite Modem Information	✓	✓	✓
Cellular Modem Information	✓	✓	N/A
Status Information			
Connection Status Information	✓	✓	✓
Device Status Information	✓	N/A	N/A
Device Log Retrieval	✓	✓	✓
Management Actions			
Reboot Device	✓	✓	✓
Remote Software Update	✓	✓	✓
Initiate IP Connection	N/A	✓	✓
Remote Configuration	N/A	✓	✓

Connection Method

CDM utilises out-of-band connectivity to provide a reliable, secure, and separate communication channel that allows administrators to remotely manage or troubleshoot devices.



Monitoring & Alerts

Create custom device connection alerts and email notifications based on when a device last transmitted data over the satellite network.

Devices can be monitored individually or added to a monitoring group.

System Information

System information about the device, software and the communications modules within the device.

Status Information

Status information about the device and its connection to the network; includes the ability to obtain more detailed information for troubleshooting purposes.

Management Actions

Tools to enable remote management of the device, from a simple device reboot to managing software versions and updating device configurations.