



EVERYWHERE

## Quick Start Guide: Android Iridium<sup>®</sup> Mail & Web app and Iridium GO!<sup>™</sup>

Iridium Mail & Web mobile application is available for download on the Google Play<sup>™</sup> store. This quick start guide provides step-by-step instructions for configuring Iridium Mail & Web application & its various features to work with Iridium GO!.

1) Download Iridium Mail & Web app

While connected to a Wi-Fi network (recommended) or a terrestrial cellular network with data connection, search for 'Iridium Mail & Web' in Google Play store. Download and install the app on your smartphone or tablet running Android 2.3 or higher.

2) Register for an Iridium account

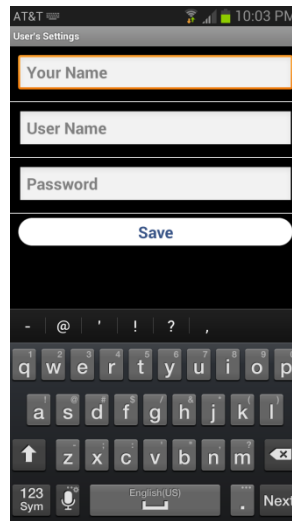
Navigate to [www.iridium.com/mailandweb](http://www.iridium.com/mailandweb) URL to fill out the registration form, follow the instructions and register for a username and password. Select 'Iridium GO!' from the device selection drop-down menu in the registration form. Registration for an account is free and required to use the application.

3) Pair the Android<sup>™</sup> device with Iridium GO!

- i. Setup the Iridium GO! unit in an outdoor area with open access to the sky and adequate signal strength prior to use
- ii. Flip up the antenna on Iridium GO! to turn it on
- iii. Wait for Iridium GO! to initialize and establish connection with the Iridium network
- iv. On your Android<sup>™</sup> device, go to Wi-Fi setting and select 'Iridium-xxxx' network. Wait for your smartphone or tablet to connect to the Iridium GO! Wi-Fi network.

4) Login to the application

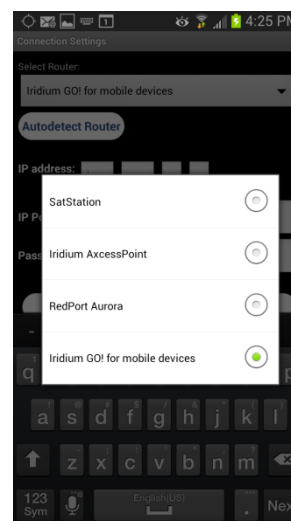
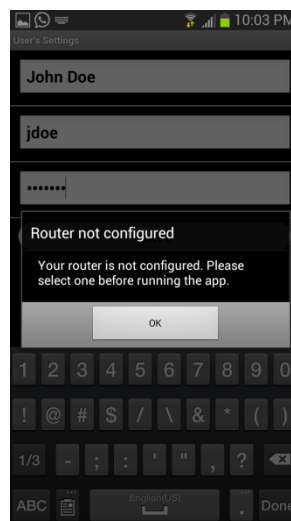
Open the Iridium Mail & Web app. You will be asked to enter the registered username and password in the initial User's setting screen. Enter the credentials as supplied during registration and click on 'Save' to gain access to the application. Accept the terms and conditions outlined in the End User License Agreement popup. This dialog is displayed only on the initial user login.



5) Configure device connection type

After logging in to the application for the first time, the app will guide you to configure the device connection type. Click OK to be redirected to the device selection screen. Select 'Iridium GO!' as your connection type and click the back button. Alternatively, you can run the device auto-detection capability by selecting 'AutoDetect Router' button.

**Note:** Ensure that the 'Diagnostics' is turned off. This is an advanced option and is used Iridium support personnel to troubleshoot device connection & detection issues with the user.



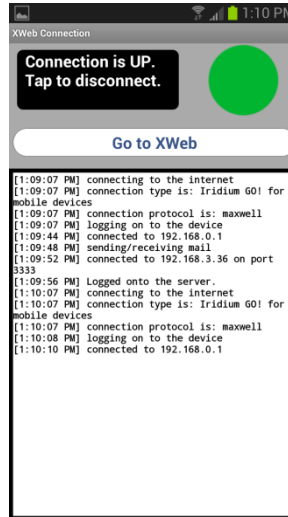


6) Configure Web surfing

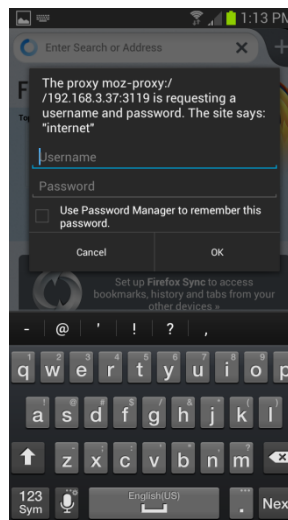
Iridium Mail & Web allows you to surf the web. To access web pages via Iridium Mail & Web, you must first download, and install XWeb Satellite Web Browsing app from Google Play store.

To access web pages using Iridium Mail & Web:

- i. Click on the 'Web' icon on the home screen. The app will start dialing a connection.



- ii. After the connection is up, the app will automatically open the XWeb browser and ask you for username and password. Enter the username and password used for registration on [www.iridium.com/mailandweb](http://www.iridium.com/mailandweb).




- iii. Enter a mobile website in the browser and press "Enter" (see [www.iridium.com/mobile](http://www.iridium.com/mobile) for a list)
- iv. Continue to access Web content. When finished, close your XWeb app and return to the Iridium Mail & Web app.
- v. Click the "Web" icon on the main home screen and stop the data connection

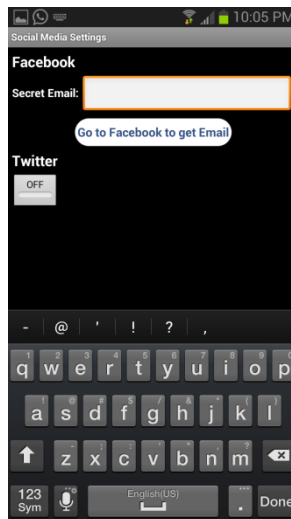


**Note:** Airtime charges will continue while the connection is active. Do not visit standard Internet pages as videos and graphic-heavy pages designed for broadband networks will not download properly using Iridium Mail & Web.

7) Configure Social Media settings (Facebook)

Facebook is a great way to update many people with the push of a single button. Most people post to Facebook from the Facebook page, which is too large for handheld satellite phones to conveniently update. Configuring Wireless Email Gateway for Facebook allows simple posts to Facebook by converting your message into an email format that Facebook will accept and post. You can even upload photos. They will be resized, compressed, and posted at a size that works over handheld satellite phone data feeds. Broadband users can also upload video.

- A. **Activate Facebook Posting:** Requires a Post-by-Email Address, assigned to you by Facebook. You also must link your cellular phone number to your Facebook account. To find your Post-by-Email Address:
- i. Open a web browser, and go to: [www.facebook.com](http://www.facebook.com)
  - ii. Sign into your Facebook account.
  - iii. Click on the  in the top right corner of the screen.
  - iv. Click "Account Settings"
  - v. Click "mobile" in the left column
  - vi. Click "Add a mobile phone number"
  - vii. Type in your Facebook password
  - viii. Select your country and you cellular phone number.
  - ix. Follow on screen instructions. Facebook will text you a code to your phone to put in the box in the Facebook window.
  - x. After your phone is linked to your Facebook account, you will find your "Post-by-Email Address" on the mobile section of the account settings.
  - xi. Copy or write down the address.
  - xii. Enter the Post-by-Email Address by selecting the Settings icon on the home screen and navigating to Social Media > Facebook > Secret Email. Then click <OK>. Notice that the Facebook icon on the user interface is now active.



B. **Posting to Facebook**

- i. Click the Facebook icon on the home screen to open the "Post to Facebook Wall"

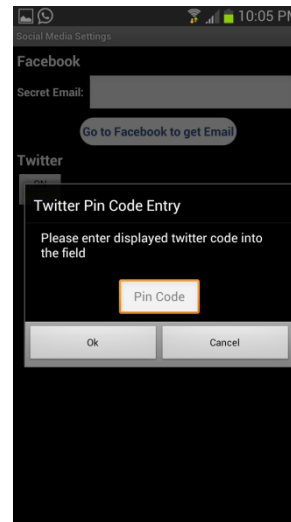
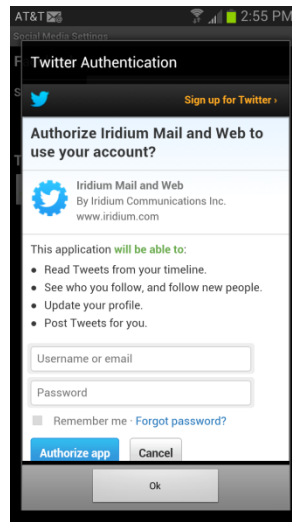


window.

- ii. Enter the status update (maximum of 255 characters) in the text box.
- iii. To upload a photo, click the <Browse> button and select the image to upload.
- iv. Click <OK>. This creates a message ready to be sent on your next connection.
- v. The posting will be sent the next time you make an email connection.

#### 8) Configure Social Media settings (Twitter)

- i. Connect to the internet at home before going on your trip. Twitter registration will fail if you are not connected to the internet.
- ii. Click on the Settings icon on home screen, select 'Social Media' and turn on Twitter
- iii. A window will appear asking you to login to Twitter & authorize Iridium Mail & Web to post on your behalf. Enter the login information and click OK



- iv. A PIN will be generated once authentication has been granted. Record the PIN.
- v. Enter the PIN in the appropriate location and hit OK.

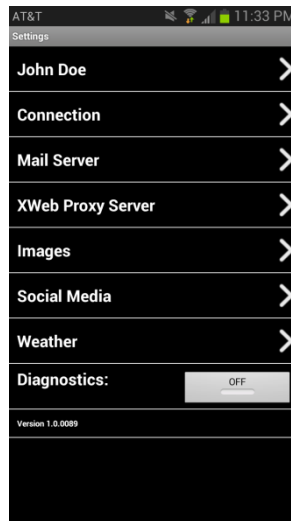
Once this configuration is complete, tweets can be posted via Iridium Mail & Web using the Twitter icon on the home screen.



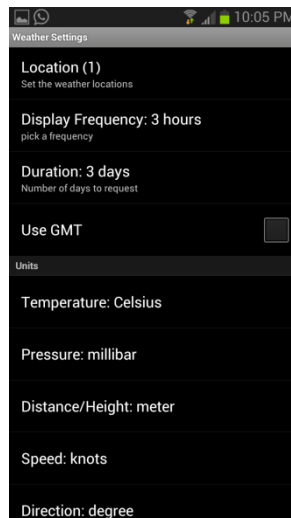
9) Configure weather forecast service

The application provides various user-customizable settings for the weather forecast service. To configure these settings

- i. Click on Settings icon on the home screen
- ii. Click on 'Weather'

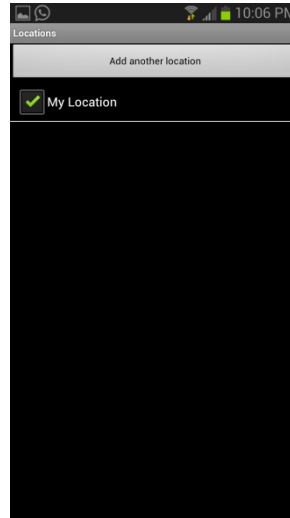


- iii. Set locales: allows you to request weather information for different locations.



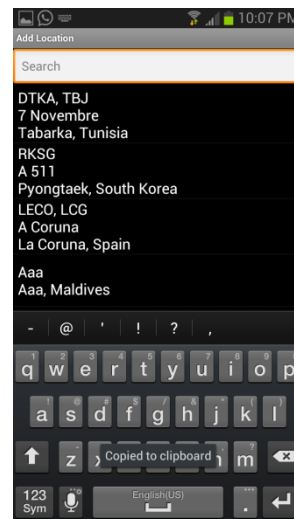
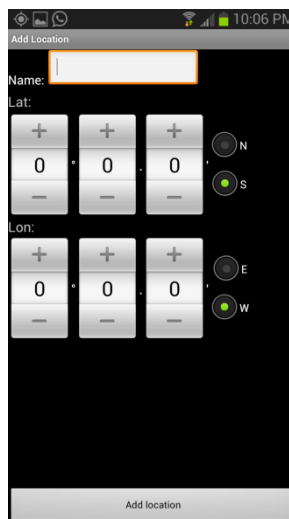
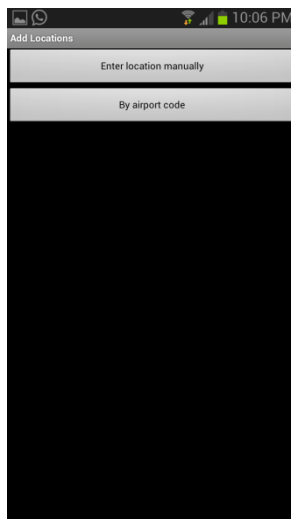
You can either save current location, enter latitude\longitude coordinates manually or select from a list of approx. 9000 airports worldwide

- a. Click on 'Locations'



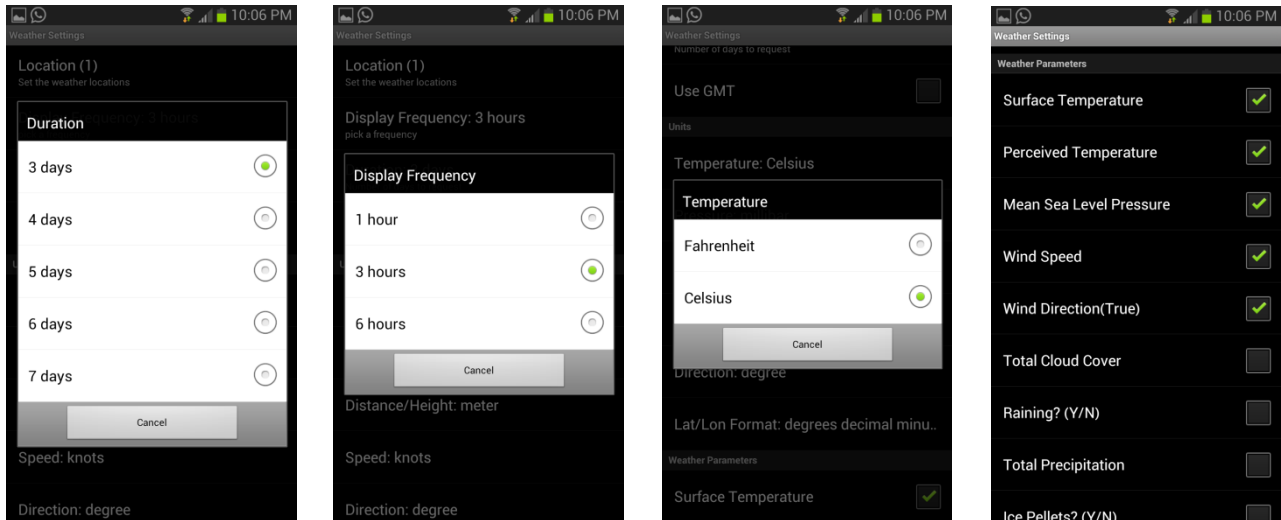
- b. To add a location, click on 'Add Another Location' button.

- Current location is automatically saved.
- 'Enter Location manually' option allows you to enter location lat\long coordinates manually in decimal format (ex. Lat: 40.76 N, Lon: 73.984 W) and add a name (ex. New York, NY). Other formats such as degrees minutes seconds, degrees decimal minutes are also supported. You can set the format in Weather settings.
- Select airport: Selecting the 'By Airport Code' allows users to search for an airport either using the 3-letter airport code or by city name



- c. Enter a user-friendly name

- iv. Configure the display frequency, duration (days), units and types of various weather parameters to request forecast



10) Exit Settings and return to the home screen

11) You are now ready to use Iridium Mail & Web features.

For more detailed information on your Iridium GO!, please visit [www.iridiumgo.com](http://www.iridiumgo.com). Prior to using Iridium GO!, read and understand the User Manual including the safety warnings and information.

### Only one communications company connects the entire globe

Iridium commands the world's furthest reaching network, making it the only truly global communications company with solutions that span from pole-to-pole. Iridium voice and data products provide superior communications solutions that allow global companies, government agencies and individuals to stay connected everywhere. With a unique, global ecosystem of partners, Iridium continues to create new, high-value capabilities that are leading the world into a new era of communication.

[www.iridium.com](http://www.iridium.com)

Iridium and the Iridium logo are registered trademarks and Iridium GO! is a trademark of Iridium Satellite LLC. All other trademarks, service marks and logos are the property of their respective holders, which have not endorsed, sponsored or otherwise affiliated with Iridium. Android and Google Play are trademarks of Google Inc. Apple, iPhone, iPod and iPad are registered trademarks of Apple Inc. App Store is a service mark of Apple Inc.  
© Copyright 2014 Iridium Satellite LLC. All rights reserved.

Android Iridium Mail & Web app and Iridium GO!

8 of 8