



Iridium Pilot[®]

User Manual

User Manual also applies to Iridium OpenPort units using firmware version AO12001 or higher.

Version 4.1

Effective September 2014

Notice:

Export Compliance Information. This product is controlled by the export laws and regulations of the United States of America. The U.S. Government may restrict the export or re-export of this product to certain individuals and/or destinations.

For further information, contact the U.S. Department of Commerce, Bureau of Industry and Security or visit www.bis.doc.gov.

Disclaimer:

Every effort has been made to ensure the correctness and completeness of the material in this document. No company shall be liable for errors contained herein. The information in this document is subject to change without notice. No warranty of any kind is made with regard to this material, including, but not limited to, the implied warranties of merchantability and fitness for a particular purpose.



Prior to installing or using Iridium Pilot, read and understand this User Manual and the Installation Guide, including the safety warnings and information. Failure to do so could result in serious injury or death.

If you do not have the Iridium Pilot Installation Guide, it can be found at www.iridium.com, or call 1-866-947-4348 and request that a Installation Guide be sent to you.

Iridium, the Iridium Logo, Iridium Pilot and any other trademark or service mark referred to or displayed in this document are trademarks or registered trademarks of Iridium Satellite LLC.

© Copyright 2014 Iridium Satellite LLC
All rights reserved. (version BUG1401)

Legal Notices

This User Manual provides product information and is provided “as is.” Iridium and its affiliated companies, directors, officers, employees, agents, trustees or consultants (“Iridium”) assume no responsibility for any typographical, technical, content or other inaccuracies in this User Manual. Iridium reserves the right to revise this User Manual or withdraw it at any time without prior notice. You can find the current version of this Iridium Pilot User Manual at www.iridium.com.

Your Iridium Pilot is subject to a Limited Warranty, Limitations, Exclusions, and Terms and Conditions which were included in the packaging with your Iridium Pilot, and which can also be found in the Appendices to this User Manual, and in your Installation Guide. If there are discrepancies in the wording of the Limited Warranty, that version associated with this User Manual is controlling. You are permitted to use Iridium Pilot only as described and specified in this User Manual, the Installation Guide, and the Limited Warranty. By using the Iridium Pilot, you are indicating that you agree to comply with the terms set forth in this User Manual as well as the Installation Guide, including without limitation the Limited Warranty, including the section describing permitted use of Iridium Pilot (the “Conditions of Use”). If you fail to comply with the Limited Warranty and the Conditions of Use, Iridium may void certain protections offered under the Limited Warranty and Iridium reserves the right to terminate your right to use Iridium Pilot on the Iridium network. If you do not accept the terms of the Limited Warranty and Conditions of Use, do not use Iridium Pilot.



Prior to using Iridium Pilot, read and understand this User Manual, including the safety warnings and information. Failure to do so could result in serious injury or death.

If you do not have the Iridium Pilot Installation Guide, it can be found at www.iridium.com, or call 1-866-947-4348 (1-480-752-5151 for outside U.S.) and request that an Installation Guide be sent to you.

Third Party Information

This User Manual might refer to third party sources of information, hardware or software, products or services and/or third party web sites (“third party information”). Iridium does not control, and is not responsible for, any third party information, including without limitation the content, accuracy, copyright compliance, compatibility, performance, trustworthiness, legality, decency, links, or any other aspect of third party information. The inclusion of such third party information does not imply endorsement by Iridium of the third party information. ANY THIRD PARTY INFORMATION THAT IS PROVIDED WITH IRIDIUM’S FACILITIES, SERVICES, PRODUCTS OR USER INFORMATION IS PROVIDED “AS IS”. IRIDIUM MAKES NO REPRESENTATIONS, GUARANTEES OR WARRANTIES IN RELATION TO THIRD PARTY INFORMATION AND IRIDIUM SHALL NOT BE LIABLE FOR ANY LOSSES, DAMAGES, LIABILITIES, JUDGMENTS, AND FINES, AMOUNTS PAID IN SETTLEMENT, EXPENSES OR COSTS OF DEFENSE SUSTAINED IN RELATION TO ANY SUCH THIRD PARTY INFORMATION.

Intellectual Property, Trade Secret, Proprietary or Copyrighted Information

To protect Iridium proprietary and confidential information and/or trade secrets, this User Manual may describe some aspects of Iridium technology in generalized terms. Iridium products may include copyrighted Iridium and third party software. Any such copyrighted software contained in Iridium products may not be modified, reverse engineered, distributed or reproduced in any manner to the extent provided by law. The purchase of any Iridium products shall not be deemed to grant either directly or by implication or otherwise, any license under copyrights, patents, or patent applications of Iridium or any third party software provider, except for the normal, nonexclusive, royalty free license to use that arises by operation of law in the sale of a product.

Content Copyright

You are exclusively responsible for the use of Iridium Pilot, including proper use of third party copyrighted materials. If you violate these terms, you agree to defend, indemnify and hold Iridium harmless with respect to any claims or actions by third parties related to your improper use of copyrighted material and to pay all costs, damages, fines and other amounts incurred by Iridium, or on its behalf, in the defense of any such claims or actions.

Contents

Section I – INTRODUCTION	1
1.0 Introduction	1
1.1 About this Manual	1
1.2 Manual Overview	1
1.3 Terms to Know	2
1.4 Related Documents	2
1.5 Safety	2
1.6 Overview of System Operation	5
Section II – GETTING STARTED	9
2.0 Getting Started	9
2.1 SIM Installation	9
2.2 Data Connection	10
2.3 Phone Connection	11
2.4 Connection Check	11
2.5 System Safety Check	12
2.6 Starting the System	13
2.7 SIM Validation & LED Indicators	14
Section III – SYSTEM CONFIGURATION	15
3.0 System Configuration	15
3.1 Network Configuration	15
3.2 Client Configuration	17
3.3 Accessing the Graphics user Interface (GUI)– IBSU Web Pages	19
3.4 Port Forwarding (Available firmware versions AO09004 and higher)	23
3.5 User Profiles	25
3.6 Performance Enhancement Proxy (Available in versions AO12001 and higher)	26
3.7 Firewall (Available in versions AO12001 and higher)	27
3.8 Bulk Configuration (Available in versions AO12001 and higher)	34
Section IV – System Operation	41
4.0 System Operation	41
4.1 Data Operation	41
4.2 Telephony Operation	42
4.3 Firmware Upgrades	48
Section V – TROUBLESHOOTING	51
5.0 Troubleshooting	51
5.1 LED Troubleshooting Charts	52
Section VI – APPENDICES	57
Appendix A – Regulatory	57
Appendix B – Specifications	60
Appendix C – Terms and Conditions, Limited Warranty (including Exclusions and Limitations), Software License and Claim Process	63

Section I – INTRODUCTION

1.0 Introduction

Thank you for purchasing the state of the art Iridium Broadband Subscriber Unit. Iridium is the only provider of truly global satellite voice and data communications solutions with complete coverage of the entire earth including polar-regions. The Iridium Pilot delivers reliable, near real-time, simultaneous high-quality voice and data connection to the Iridium satellite network from any point on the globe.

1.1 About this Manual

This is a user manual for the Iridium Pilot system. The readers of the manual include anyone who is using or intends to use this system. No specific skills are required to operate the Iridium Pilot. However, it is important that you observe all safety requirements listed in Section 1.5 of this manual, and operate the system according to this manual's guidelines.

Note that this manual does not cover installation of Iridium Pilot. For information on installation refer to the Installation Guide.

1.2 Manual Overview

This manual has the following sections:

- **Introduction** Contains an overview of the Iridium Pilot product as well as an overview of the Iridium network and how Iridium Pilot utilizes Iridium OpenPort service to provide data and voice services to customers. Important safety information is also included in this section.
- **Getting Started** This section provides the user with an overview and safety check to begin operating the unit after install. Details on SIM installation and validation as well as data and phone connections are detailed.
- **System Configuration** Explains LAN settings for configuring the Iridium Pilot on the customer's network. User profiles are defined and details are provided on how to access the Graphical User Interface and other features of the system.
- **System Operation** Details are provided on how to operate the data and telephony services of the system, including placing data and voice calls and features of those calls provided by the service.
- **Troubleshooting** Contains details to assist the user in troubleshooting issues by providing an LED status chart and troubleshooting guide.
- **Appendices** Additional information for users of the Iridium Pilot system, including, regulatory references, product specifications and warranty information.

This manual may not always reflect the latest software functionality for your terminal.

1.3 Terms to Know

- ADE: Above Decks Equipment, the radiating (satellite) unit
- BDE: Below Decks Equipment, the user interface unit that connects to your computer system and telephone(s)
- IBSU: Iridium Broadband Subscriber Unit (The ADE and BDE together)
- POTS: Plain Old Telephony System
- SIM: Subscriber Identity Module
- PSU: Power Supply Unit
- Provisioned: A term used to indicate the SIM card is activated for voice and data connection. This can only be done by a Service Provider

1.4 Related Documents

Title and Description	Document
Installation Guide	Explains how to install the Iridium Pilot ADE/BDE.

1.5 Safety

1.5.1 Electrical Shock Warning

The ADE and the BDE should be installed by a qualified professional technician trained in the installation of marine electronics and antennas. Failure to comply with these precautions or with specific warnings on the equipment, in the Installation Guide or in this manual violates the safety standards of the design, manufacture and intended use of this equipment.

WARNING



Prior to using Iridium Pilot, read and understand this User Manual including the safety warnings and information. Failure to do so could result in serious injury or death.


If you do not have the Iridium Pilot Installation Guide, it can be found at www.iridium.com, or call 1-866-947-4348 (1-480-752-5151 for outside U.S.) and request that an Installation Guide be sent to you.

Follow all safety precautions carefully. Improper installation may result in injury or inability of the equipment to function properly. Only a qualified professional technician trained in the installation of marine electronics and antennas should remove the installation cover on the BDE.

Iridium Satellite LLC disclaims all liability for failure to comply with these requirements and improper installation.

Shock Hazard

! WARNING



The Below Decks Equipment (BDE) contains low voltage that may cause serious injury if opened. Do not, under any conditions, open or dismantle the BDE. Failure to follow these instructions could result in serious injury or death.

1.5.2 Radiation Hazard

Potentially hazardous radio frequency (RF) is transmitted from ADE.

To avoid risk to personnel keep the following distances between personnel and the antenna when the system power is ON. Personnel must maintain a minimum separation distance of 1 m from the unit and installers must place the Above Deck Equipment transmitter in a manner to maintain this minimum spacing requirement.

Figure 1.0




RF Warning Label on top of the ADE



Description	Minimum Distance from Antenna
Within 0° - 180° of the antenna elevation range	1.0 m (3.3 ft.)

! WARNING



The Above Decks Equipment (ADE) transmits radio frequency energy (RF) that may cause thermal injuries including tissue damage from increased heating and body temperature. When the system power is ON keep all personnel a minimum of 1.0 m (3.3 ft.) from the antenna (see Radiation Hazard). Failure to do so could result in serious injury or death.

1.5.3 Antenna mounting and substitution

The antenna supplied by the manufacturer or radio dealer must not be mounted at a location such that during radio transmission, any person or persons can come closer than the indicated minimum safe distance to the antenna: 1.0 m (3.3ft).

To comply with current FCC RF Exposure limits, the antenna must be installed at or exceeding the minimum safe distance shown above, and in accordance with the requirements of the antenna manufacturer or supplier.

Base Station Installation: The antenna should be mounted on an outdoor permanent structure. RF Exposure compliance must be addressed at the time of installation.

You may contact your radio dealer or the manufacturer for further instructions. You, as the qualified end-user of this radio device, must control the exposure conditions of bystanders to ensure the minimum separation distance (above) is maintained between the antenna and nearby persons for satisfying RF Exposure compliance. The operation of this transmitter must satisfy the requirements of Occupational/Controlled Exposure Environment, for work-related use. Transmit only when person(s) are at least the minimum distance from the properly installed, externally mounted antenna.

If you have any concerns about the adequacy of the mounting or support for the Iridium Pilot device, seek advice from a structural engineer or other qualified individual.

WARNING



Exposure to radio frequency energy (RF) from the antenna may cause thermal injuries including tissue damage from increased heating and body temperature. Keep everyone at a safe distance from the antenna when the system power is ON. Personnel must maintain a minimum separation distance of 1.0 m (3.3 ft) from the unit and installers must place ADE transmitter in a manner to maintain minimum spacing requirement. Failure to do so could result in exposure to radio frequency energy (RF) transmitted from the ADE that could result in serious injury or death.

WARNING



Exposure to radio frequency energy (RF) from the antenna may cause thermal injuries including tissue damage from increased heating and body temperature. Do not substitute any antenna for the one supplied or recommended by the manufacturer or radio dealer. Substitution of antennas could cause exposure to excess radio frequency radiation which could result in serious injury or death.

WARNING



ADE must be properly mounted and secured at install location. Failure to do so could result in detachment of the unit, causing disruption in operation of the unit, or danger from a falling unit, which could result in serious injury or death.

WARNING

Damage to the paint coating may allow rust to the ADE which could result in failure of the ADE. This in turn could cause disruption in operation of the Iridium Pilot device or danger from a falling unit. Avoid damaging the paint coating. If damage occurs, re-apply appropriate anti-corrosion paint. Failure to do so could result in serious injury or death.

1.5.4 Blasting Areas**WARNING**

To avoid interfering with blasting operations, turn your device OFF when in a “blasting area” or in areas posted: “Turn off two-way radio.” Obey all signs and instructions. Failure to do so could result in serious injury or death.

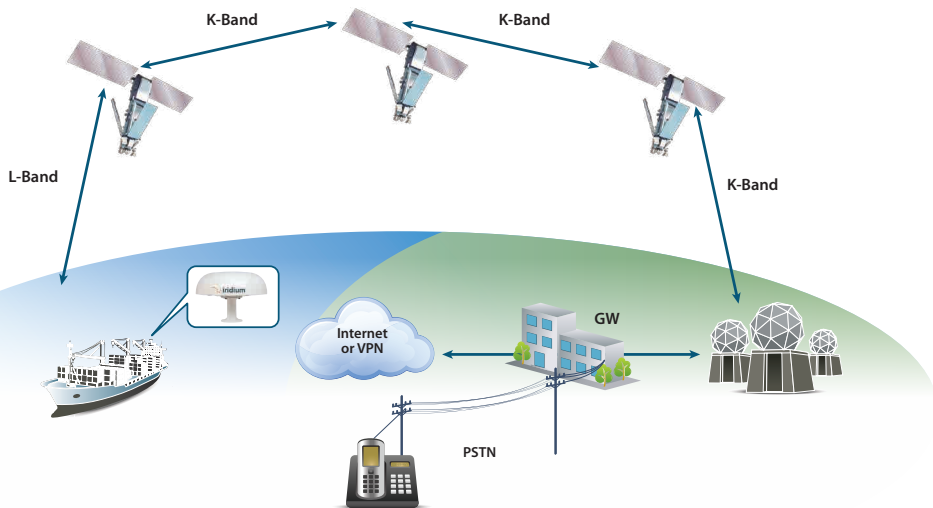
1.6 Overview of System Operation**1.6.1 Iridium Satellite Communications**

The Iridium satellite network is comprised of 66 low-earth orbiting (LEO), cross-linked satellites, providing voice and data coverage over Earth’s entire surface. The satellites operate as a fully meshed network in six orbital planes, positioned at a height of 781 kilometers (485 miles) with one satellite every 32 degrees of latitude, with each satellite completing one orbit every 100 minutes, traveling at a rate of 16,832 miles per hour. Each plane has 11 mission satellites performing as nodes in the telephony network. The spare satellites are on orbit ready to replace any unserviceable satellite. Iridium has gateways in Arizona, Alaska and additional telemetry, tracking and control facilities in Canada and Norway. It is the largest commercial satellite constellation in the world.

This constellation ensures that every region on the globe is covered by at least one satellite at all times. Each satellite is cross-linked to four other satellites; two satellites in the same orbital plane and two in an adjacent plane. The satellite constellation is expected to provide continuous global coverage until 2018 without any additional launches of satellites.

Figure 1.2

An Iridium Pilot voice or data call is received by the closest satellite to the device's current location, anywhere on the Globe. The traffic is routed through the meshed satellite network and lands at the Alaska Ground Station, and, is then routed over terrestrial networks to the Gateway in Arizona. At the gateway, traffic is converted back to internet protocol (IP) and voice, depending on call type and delivered to the IP cloud or the public switched telephone network (PSTN).



1.6.2 Iridium Pilot Terminal Components

Figure 1.3

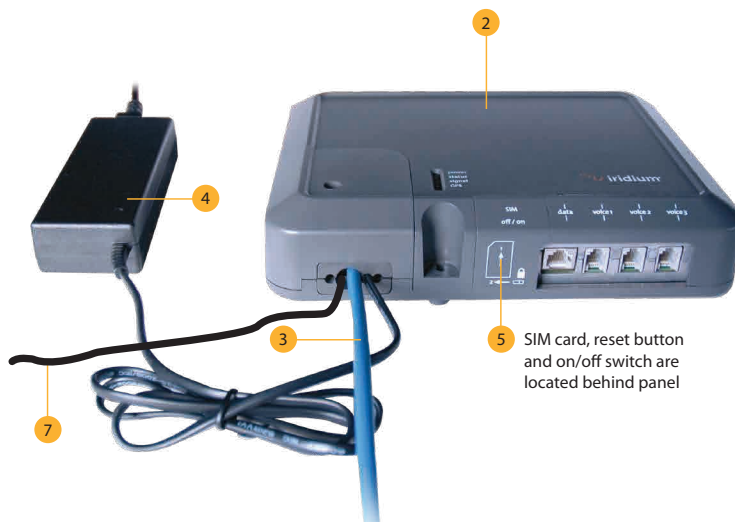


Above Decks Equipment

The Above Decks Equipment (ADE) provides the communication connection between the BDE and Iridium's satellites. The ADE will automatically locate and track Iridium satellites overhead.

Below Decks Equipment

Figure 1.4



- 2. Below Decks Equipment:** The Below Decks Equipment (BDE) is the appliance to which you connect your telephones and computers. It is capable of handling three POTS/RJ11 telephone handsets and one Ethernet data connection.
- 3. ADE / BDE Cable:** The cable connects the ADE to the BDE. It is shielded and has a waterproof connection for the ADE.
- 4. AC Power Supply Unit:** The AC Power Supply Unit (PSU) provides power to the BDE.
- 5. SIM:** The assigned SIM card validates the system at start-up, allows connection to the Iridium network, and enables the appropriate phone and data lines.
- 6. ADE Ground Cable (3m standard and 8m available):** The ground cable connects the ADE to a grounded source at the point of installation. Comes with an adapter kit to facilitate alternative installations.
- 7. BDE Ground (2.5m):** This ground cable connects the BDE to ground at the installation location.
- 8. POTS Handsets (not shown):** Two handsets are provided with your Iridium Pilot Equipment: a Standard Phone for installation on the bridge, and one Crew Phone, designed for quick access to Iridium GoChat™ Crew Calling services.

1.6.3 Product Specifications

See Appendix B for product specifications.

Section II – GETTING STARTED

2.0 Getting Started

2.1 SIM Installation

Steps

1. Remove SIM cover (retain somewhere safe) and ensure ON/OFF switch is in OFF position.
2. Insert suitable SIM card and slide the locking tab across (see Figures 2.1, 2.2, 2.3).
 - a. **Note:** If the SIM card is removed or unlocked during operation any voice or data calls will be terminated immediately.
3. Power on and replace the SIM cover.
4. Connect computer/router via Ethernet port.
5. Connect phones and/or PBX via RJ11 ports.
6. Check all connections.

Figure 2.1

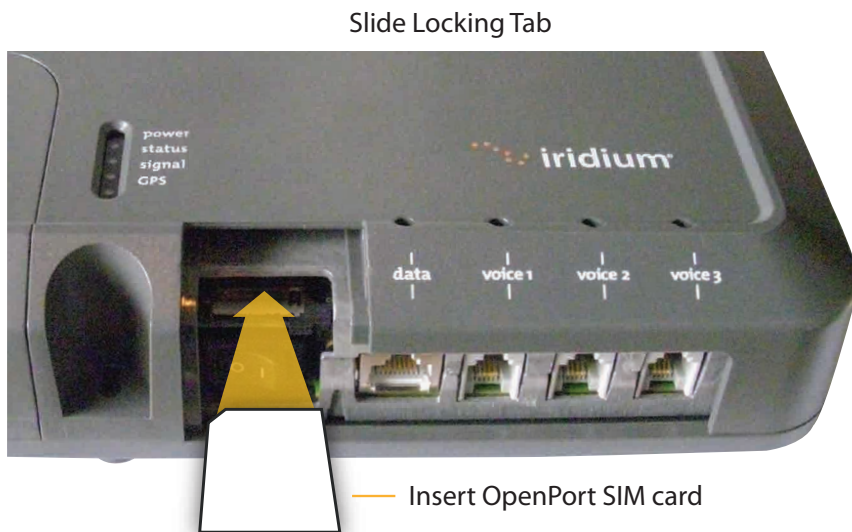
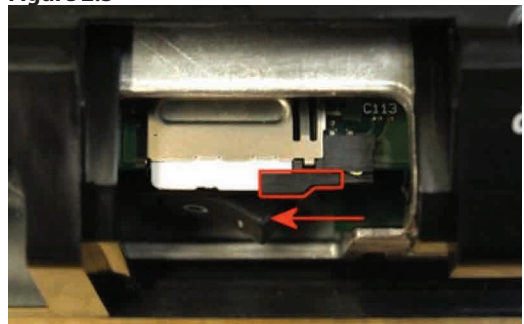


Figure 2.2



Figure 2.3



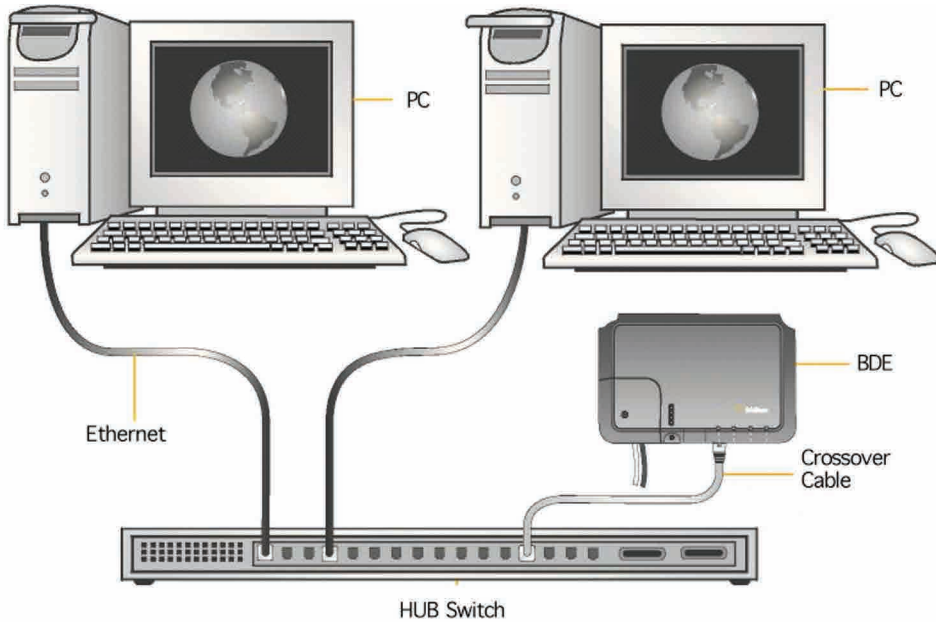
2.2 Data Connection

The BDE provides one RJ-45 port for connection to your computer or network.

The internal structure of the computer network depends on your needs. The Iridium Pilot is capable of handling everything from the connection of a single PC to a complete Ethernet network. The data port provides an Ethernet connection of 10BaseT using an RJ45 connector.

If the Below Decks Equipment (BDE) is to be connected to a down-stream port of an Ethernet hub or switch then the user will need to use a crossover Ethernet cable. Again, the data port must be provisioned to connect to the Internet. The data LED will be illuminated green.

Figure 2.4



2.2.1 Single PC Connection

- Connect directly to the data port of the BDE
- Use a standard Ethernet cable
- Configure PC for static configuration (for more details see Windows® PC Set-up for Static Configuration)

2.2.2 Multiple PC Connection

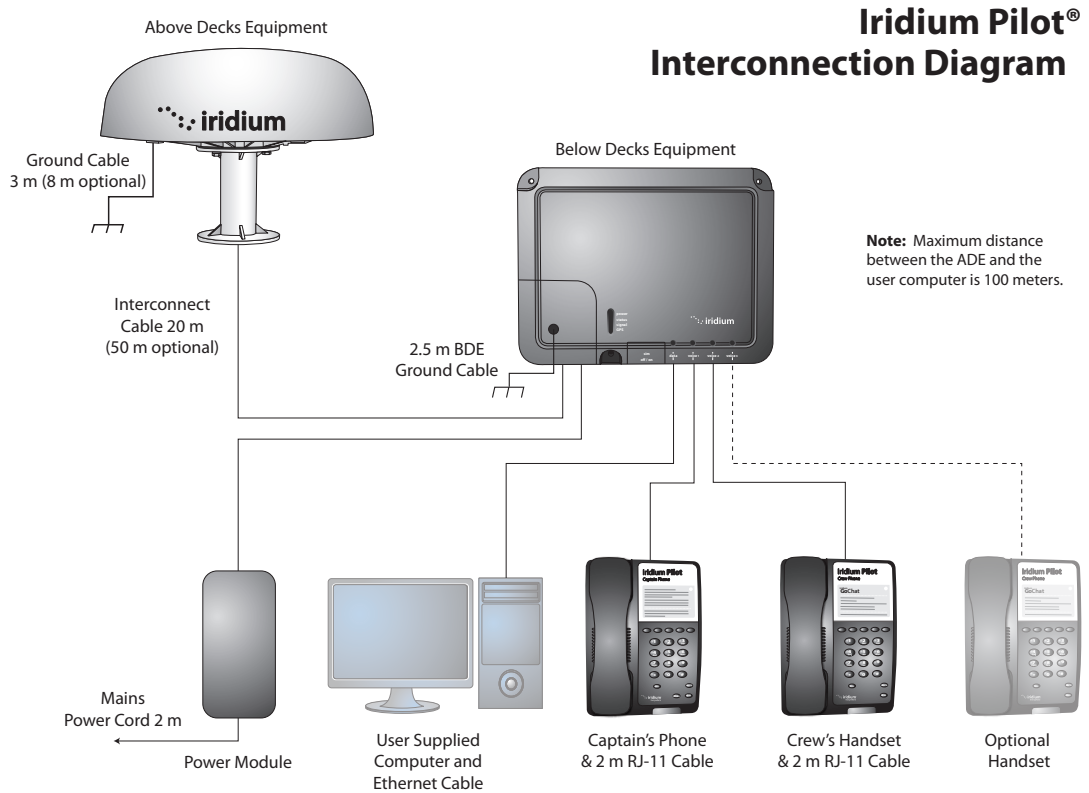
- Connect the switch/hub/router to the data port on the BDE using a crossover Ethernet cable.
- Connect the PCs to the Ethernet switch, hub or router (Note: these multiple devices will be sharing the same satellite connection over the Iridium network, the more devices connected the smaller the share of the connection.)
- Depending on how your ship-side LAN is configured you may or may not want the Iridium Pilot to act as a DHCP server and to perform DNS forwarding (see the following section to change).

See the Data Operation section for more information on configuring the data connection.

2.3 Phone Connection

The BDE provides three connectors for POTS handsets, which can be used simultaneously. In order to make or receive a phone call you must have a valid SIM installed in the BDE.

Connect the handsets to the RJ-11 ports on the BDE.



2.4 Connection Check

Check all connections before powering the system on.

2.5 System Safety Check

Now that the system has been set up by the installer and is ready for use, once it is turned ON, it is important to conduct the following checks before using the system:

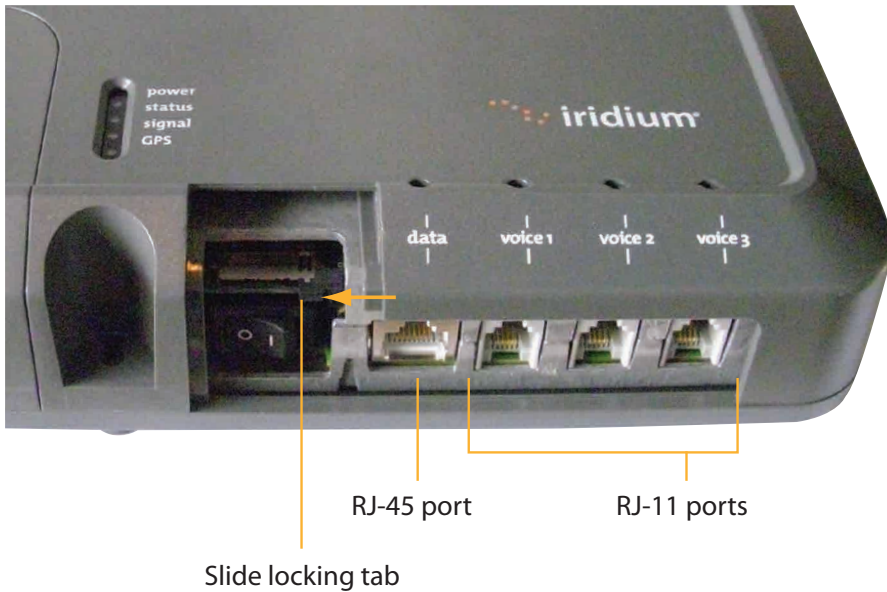
1. Ensure that your equipment is properly grounded and there is power to the units.

Note: The ADE ground cable and the BDE ground cable (supplied with the kit) must be installed to an appropriate ground connection in order to ensure proper operation of the system.

NOTICE: Install ground cables for both the ADE and BDE before using Pilot. Instructions on how to install the ground cables are provided in the Installation Guide. Failure to properly ground the ADE and the BDE could result in property damage in the case of a lightning strike or other excessive static build-up.

2. Make sure the valid Iridium Pilot SIM card is installed in the SIM holder and the SIM card slide locking tab is in the correct position. RJ-45 port is connected to a computer, switch, router or server, and RJ-11 ports are connected to handsets. (Figure 2.5)

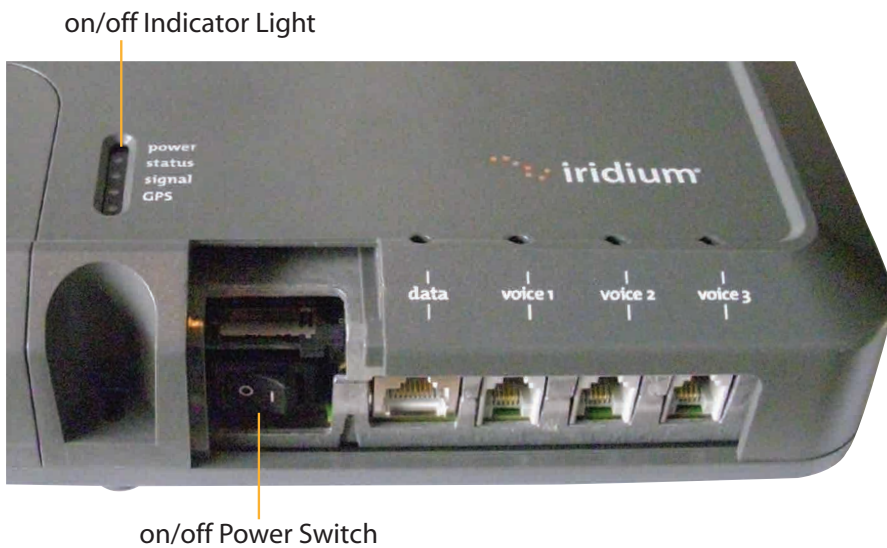
Figure 2.5



2.6 Starting the System

1. On the BDE, press the on/off Power Switch located under the SIM cover. The system authentication will occur and the ADE will automatically establish a link with the Iridium network.

Figure 2.6



The on/off Indicator Light should be green

Note: If the on/off Indicator Light is not green, see Chapter 5, Troubleshooting the BDE.

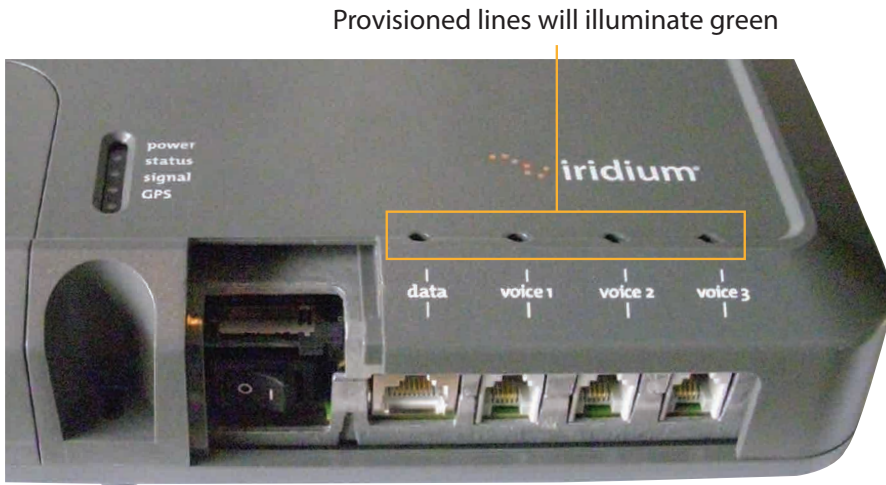
2. Turn on your computers or network.

2.7 SIM Validation & LED Indicators

In order to access the Iridium network the BDE must have a valid SIM card installed. The number and type ("Standard" or "Crew") of voice lines available is set when your Service Provider provisions (enables) the SIM card.

The BDE will indicate (illuminate green) the lines that have been provisioned.

Figure 2.7



For example: There are three phone lines available but you choose to only provision one of them. Upon system activation only one phone line will be available.

Your service provider is the only party capable of provisioning voice and data lines. Contact your service provider to add or delete phone and data lines. Once the service provider has provided the appropriate line(s), this information is automatically downloaded to the Iridium Pilot the next time you access the network.

Note: If the SIM card is removed or unlocked during active voice or data calls, they will be terminated immediately. In this case, the SIM must be reinserted and SIM card slide locking tab must be in its correct position, then the BDE unit must be powered on/off again to be reactivated.

Check LEDs as expected :

- Power LED is green; power is being provided to the BDE and it is switched on.
- Status LED is amber (green when in use); BDE and ADE can communicate, idle.
- Signal LED is amber or green; ISU can see satellite network (red = no signal, amber = marginal signal, green = acceptable signal).
- GPS LED is green; ISU knows where it is.

Section III – SYSTEM CONFIGURATION

3.0 System Configuration

Configuring the system and full diagnostics can only be done by the System Administrator and requires a login password. The default user name and password is “admin”. Change the password if desired.

3.1 Network Configuration

Configuration of LAN Settings

The Iridium Pilot Terminal allows you to configure the following LAN settings, via the web pages when logged on as ‘admin’. These settings include:

- IP Address
- Subnet Mask
- DHCP Server and IP Address Range to Use
- DNS Forwarding

IP Address

This is the IP address of the Iridium Pilot unit as seen from the vessel. The factory default is 192.168.0.1. You should not change this default unless there is already LAN equipment on the vessel, in which case you must set this to an unused IP address of ship-side LAN.

Subnet Mask

This defines the subnet used on the vessel. The factory default is 255.255.255.0. You should only change this default if you change the IP address of the Iridium Pilot unit. All network devices must use the same subnet in order to communicate with one another.

Dynamic Host Configuration Protocol (DHCP) server

This automatically provides unique IP addresses and appropriate configuration parameters to each network device connected to the Iridium Pilot unit. In the current configuration, DHCP is disabled.

Note: While DHCP is disabled, devices connected to the Iridium Pilot unit will need to have their network settings manually configured. There must only be one DHCP server on any network segment. Please see insert on “how to configure network connections manually with Windows®.”

DHCP IP Address minimum and maximum

This sets the range of IP addresses for the DHCP server to use. The factory default is 192.168.0.2 to 192.168.0.254. The range specifies the maximum number of devices on the network. Both the maximum and minimum value must be in the same subnet.

Domain Name System (DNS) forwarding

DNS is used to convert network names (such as www.google.com) into the IP addresses needed to connect to the device. The factory default is disabled. The Iridium Pilot unit acts as a switching station so that it automatically forwards DNS requests to the appropriate DNS server.

Once you change the LAN configuration and press the 'Update IP Configuration' button the Iridium Pilot will reboot to apply the configuration changes - this will drop any calls. Once the Iridium Pilot has rebooted any connected network devices may take up to 10 minutes to automatically obtain new settings. During this switch over time the network devices may not be able to communicate with the Iridium Pilot or/and duplicate IP address settings can occur.

If you change the LAN settings it is advisable to reboot any attached devices to avoid this issue

Note: The LAN Settings can be reset to the factory defaults using the reset switch on the BDE.

Exactly how you configure the network clients on the vessel will vary depending on the operating system. Refer to your operating system manual or technical support organization to obtain the exact details to achieve this. You should normally use the Iridium Pilot DHCP server to automatically configure the correct client settings. If you use this option the clients must be setup to obtain their settings automatically. This is the easiest way to setup a network.

If you use a static configuration you must ensure that the IBSU is the default gateway, that the IBSU is on the same subnet as all devices and each network address is unique.

Static Public IP

In order to establish a static public IP address, you must contact your SP. Iridium has established a range of IP addresses for use on Pilot. There is a monthly fee for the setup of a static public IP address. Contact your SP for more details on static public IP address for Pilot.

A static IP address (or fixed IP address) is an IP address that has been manually configured for a device, allowing remote access to the hardware without requirement of a VPN approach. The static IP address is defined at time of SIM card provisioning, and will not change whereas a DHCP assigned IP address can and does change.

A static IP address best supports domain name resolution so that a computer can be most reliably reached over a network by its host/domain name.

Note: Setting up a static public IP address does expose your device more readily to internet spiders that look for open and available IP addresses. Adequate security is required for static IP use. Iridium is able to support whitelist IP ranges for controlling access to an established static public IP. Speak with your SP on this arrangement.

3.2 Client Configuration

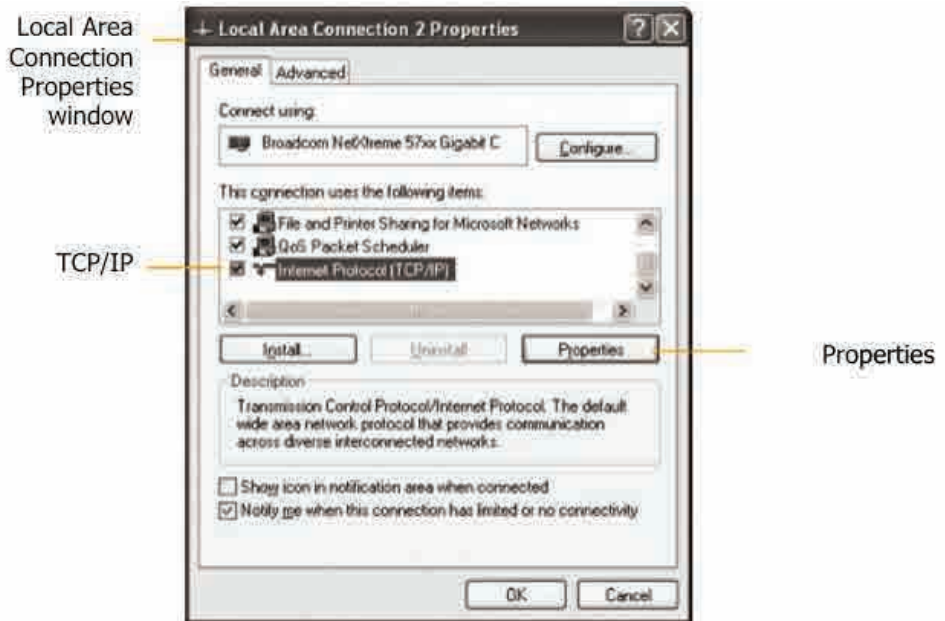
Windows® PC Set-up for Static Configuration

Depending on the needs of your computer network, it may be necessary to assign a static IP address to the computer directly connected to the Iridium Pilot unit. The following steps cover a Windows XP® configuration, however, they can generally be applied to all Windows® setups. For additional assistance in configuring your desktop computer for a static connection please contact your local computer administrator.

1. Open Network Connections located in the Control Panel.
2. Locate the icon for the Local Area Connection connected to the Iridium Pilot unit and right-click Properties.
3. From the list of connections used, highlight Internet Protocol (TCP/IP) and click Properties

Microsoft product screenshot(s) reprinted with permission from Microsoft Corporation. Windows and Windows XP are either registered trademarks or trademarks of Microsoft Corporation in the United States and/or other countries.

Figure 3.0

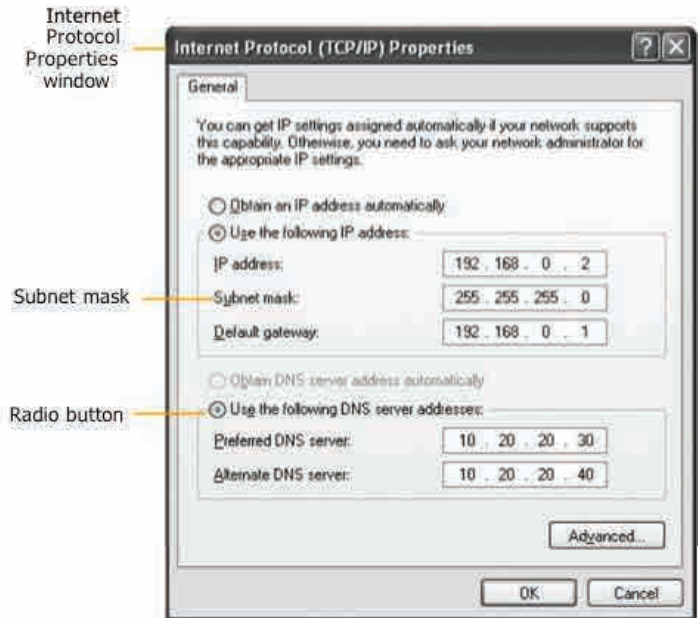


4. On the Internet Protocol (TCP/IP) Properties page (Figure 3.1), click the button that says “Use the following IP address.” Enter an IP address to be used by this computer.

Note: This IP address should be different from the Iridium Pilot unit while still being in the same IP range. For example, if the Iridium Pilot unit is configured as 192.168.0.1 (default), then a computer connected to the IBSU must be configured within the IP range 192.168.0.x where x is anything between 2 and 254.

5. Next, set the Subnet mask: to 255.255.255.0
6. Enter the IP address of the Iridium Pilot unit for the field marked Default gateway.
7. Lastly, check the radio button that says "Use the following DNS sever addresses:". Enter the DNS server address provided by your Service Provider for the Preferred DNS server address. If an address is not provided use the Iridium Pilot unit's IP address as shown below.
8. Click OK to close any open IP properties pages.

Figure 3.1



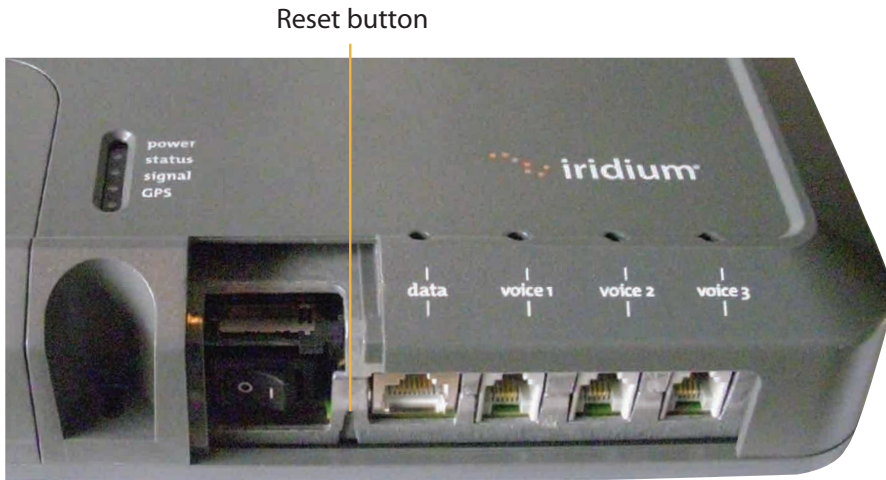
3.3 Accessing the Graphics user Interface (GUI)– IBSU Web Pages

To access the IBSU Web Pages:

1. Connect a PC to the data port on the BDE
2. Open the web browser and in the web browser address window, type: `http://192.168.0.1`.

Note: The default IP address is assigned to the IBSU at the factory. The IP address can be changed if there are multiple IBSU's at a single site. If this has been done, then type in the new IP address. To reset the IP address back to the default (192.168.0.1), press the network reset button on the BDE.

Figure 3.2



3. Select "Login" for administrator level diagnostics. Type in the user name and password specified by Iridium. Call your Service Provider if login fails.

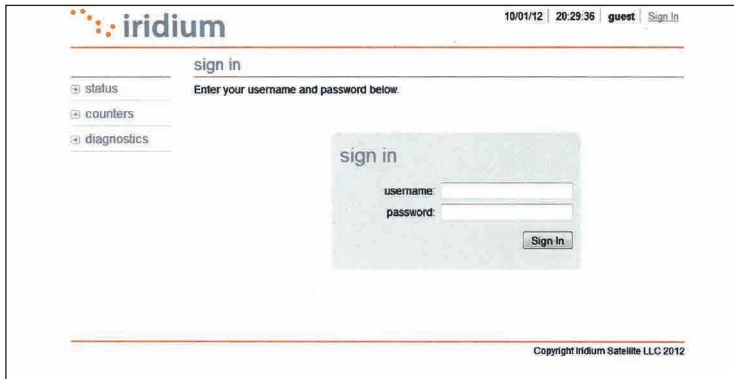
4. Select the appropriate link:

Select to link to:

- Status
- Counters
- Diagnostics

Note: The information displayed on the web pages is not dynamically updated. To update the information, refresh the web page from you browser.

Figure 3.3



Windows and Windows XP are either registered trademarks or trademarks of Microsoft Corporation in the United States and/or other countries.

Status

Select Status to link to Counters, Diagnostics, Configuration, and Admin Password. This page provides:

- LED Status
- Signal Strength
- SIM status
- GPS status, location
- Satellite Connection status
- Voice Line status

Figure 3.4



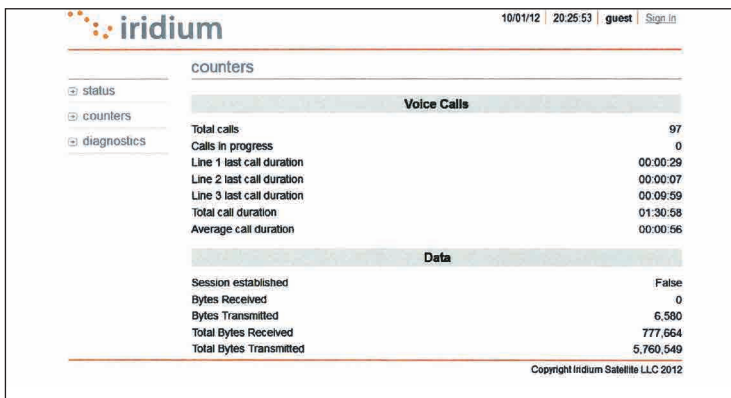
Windows and Windows XP are either registered trademarks or trademarks of Microsoft Corporation in the United States and/or other countries.

Counters

Select Counters to link to Status, Diagnostics, Configuration, and Admin Password. This page provides:

- Voice Call Information
- Data Use Information

Figure 3.5



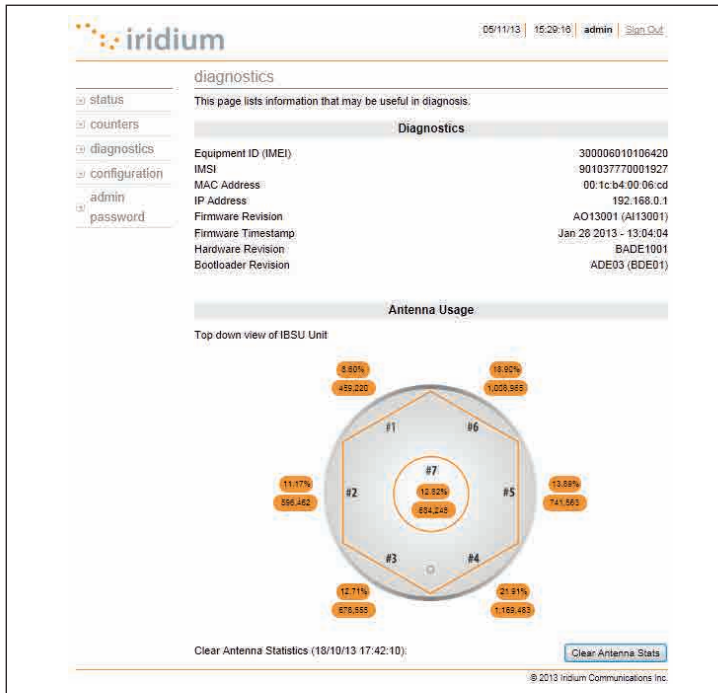
Windows and Windows XP are either registered trademarks or trademarks of Microsoft Corporation in the United States and/or other countries.

Diagnostics

Select Diagnostics to link to Status, Counters, Configuration, Admin Password and Antenna Utility Tool. This page provides useful diagnostic information such as:

- Equipment ID
- MAC & IP address
- Hardware & Firmware revision level

Figure 3.6



The Antenna array requires Admin login. You will not see this array unless you are logged in as Admin.

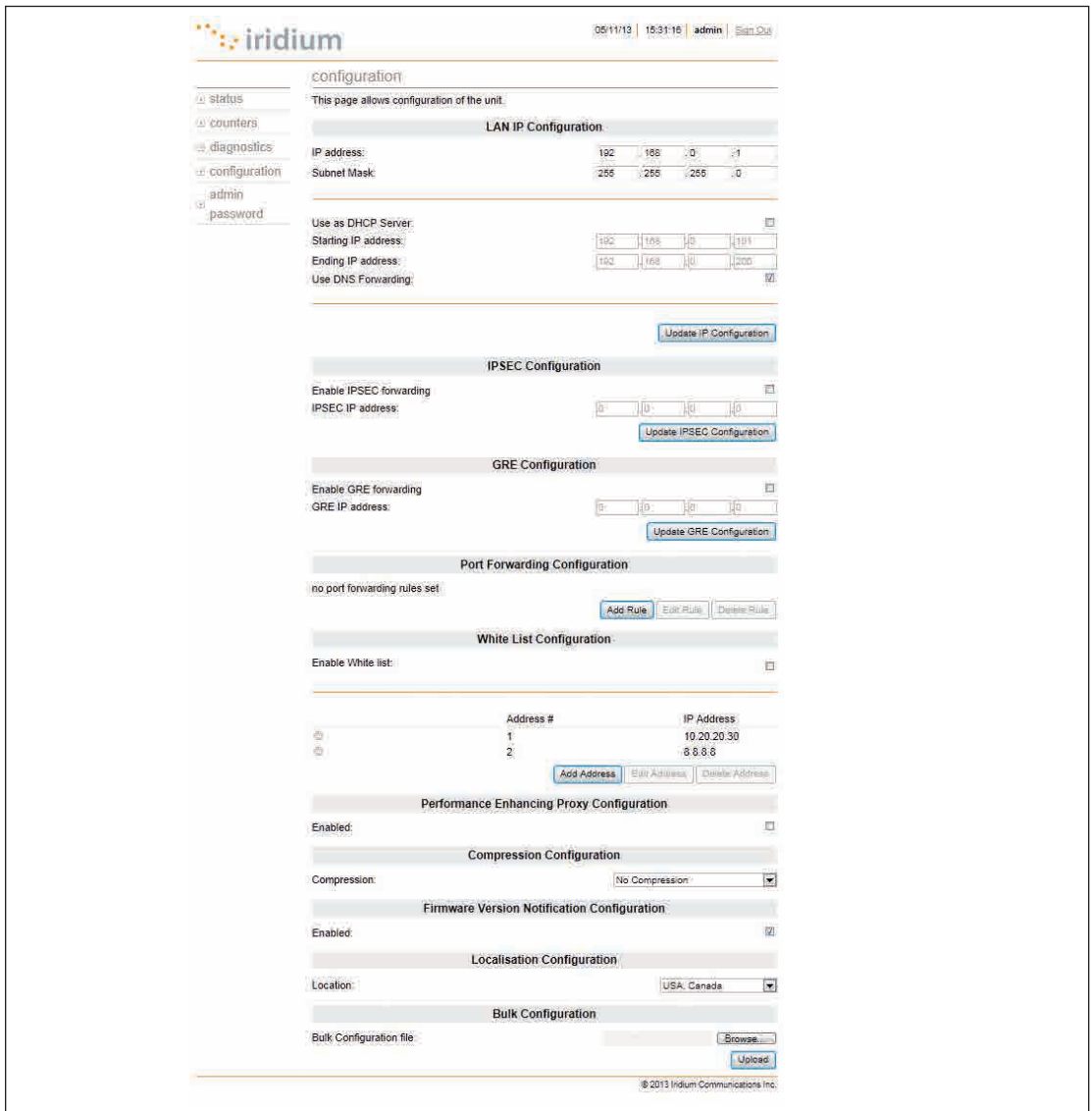
Windows and Windows XP are either registered trademarks or trademarks of Microsoft Corporation in the United States and/or other countries.

Configuration

Select Configuration to link to Status, Counters, Configuration and Admin Password. This page provides:

- LAN IP configuration
- Port Forwarding configuration
- Localization configuration

Figure 3.7



Windows and Windows XP are either registered trademarks or trademarks of Microsoft Corporation in the United States and/or other countries.

3.4 User Profiles

There are two user profile levels:

- Guest
- Administrator

The default access is Guest. No log-in is required.

3.4.1 Guest Level

The Guest level provides the user basic access to the system, but does not allow the user to make any changes to the system.

Figure 3.8



Windows and Windows XP are either registered trademarks or trademarks of Microsoft Corporation in the United States and/or other countries.

3.4.2 Administrator Level

The Administrator level provides the user access to advanced configuration settings within the system.

Figure 3.9



Windows and Windows XP are either registered trademarks or trademarks of Microsoft Corporation in the United States and/or other countries.

To change the Admin password, enter the current password (the default password is “admin”) followed by your new password. Enter the new password a second time and click the Change Password button. Your new password is now active.

3.5 Port Forwarding (Available firmware versions AO09004 and higher)

Port forwarding is taking a port on the outside of the Iridium Pilot, such as port 80 (typically used for web servers) and passing it to another machine on the internal network, on the same port (80).

Port redirection is taking a port on the outside, i.e. 80, and passing it to another machine on the internal network, but on a different port, i.e. 8080.

Before beginning the user will need to know what port they wish to forward from outside the Iridium Pilot, to the inner network, and whether or not they need to ‘redirect’ the port as well. They will also need to know if the data will be TCP or UDP.

1. From the Configuration screen in the GUI, Under Port Forwarding Configuration, Click ‘Add Rule’ (see Figure 3.7). An administration page will open (Figure 3.10), shown below:
2. Enter /Select the following:
 - The external port number to forward to the inside.
 - The internal port number which will be receiving the data. Note: If you are redirecting as well, this number will be different than the external port number.
 - The IP address of the computer which is receiving the data. Note: This will need to be on the same subnet as the Iridium Pilot IBSU.
 - The protocol for the data: TCP or UDP.

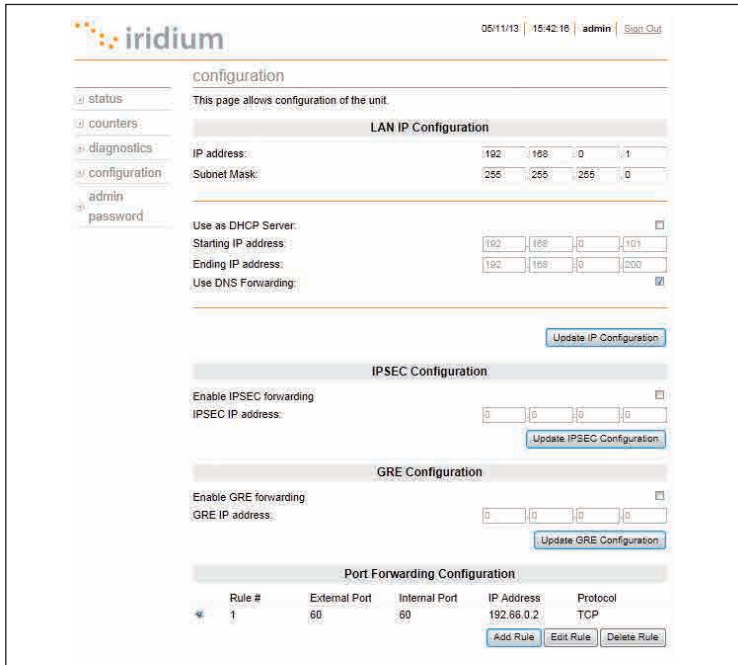
Figure 3.10



Windows and Windows XP are either registered trademarks or trademarks of Microsoft Corporation in the United States and/or other countries.

3. Click OK. The updated configuration page with the newly added rule is displayed.

Figure 3.11



Windows and Windows XP are either registered trademarks or trademarks of Microsoft Corporation in the United States and/or other countries.

4. Add additional rules as needed.

Note: Rules can be turned on/off without having to be deleted.

Figure 3.12



Windows and Windows XP are either registered trademarks or trademarks of Microsoft Corporation in the United States and/or other countries.

3.6 Advanced Port Forwarding Settings

Advanced Port Forwarding settings are possible with the Pilot system using IPSEC or GRE as per the following section.

3.6.1 IPSEC – IP Security (Available in versions AO12001 and higher)

The IPSEC setting allows an IP address to be specified as the source/destination for all IPSEC packets that are sent by or arrive over the air to the Pilot ISU. The router/PC connected to the Pilot system must support the IPSEC protocol for this capability to function. Refer to your router/PC documentation for confirmation.

The benefit of IPSEC is that all IP based protocols can be secured using IPSEC for secure network communications

To enable IPSEC configuration, when logged in as Administrator, from the configuration page, select the IPSEC Forwarding Enable checkbox and enter the IP address to be used for IPSEC port forwarding.

To disable IPSEC, de-select the checkbox.

3.6.2 GRE – Generic Routing Encapsulation (Available in versions AO12001 and higher)

The GRE setting allows an IP address to be specified as the source/destination for all GRE packets that are sent by or arrive over the air to the Pilot ISU. The router connected to the Pilot system must support the GRE protocol for this capability to function. Refer to your router documentation for confirmation.

GRE allows for IP packets to be tunneled from a corporate LAN to a network on the PC side of a Pilot ISU, exposing the services available on the corporate LAN to the network at the installation location. All IP based protocols can be tunneled using GRE, so UDP, TCP and Email is supported. GRE requires VPN connection.

To enable GRE configuration, when logged in as Administrator, from the configuration page, select the GRE Forwarding Enable checkbox and enter the IP address to be used for GRE port forwarding.

To disable GRE, de-select the checkbox.

3.7 Performance Enhancement Proxy (Available in versions AO12001 and higher)

Improved efficiency is provided through the Performance Enhancement Proxy (PEP) feature and data compression. PEP provides improved throughput for data connections that suffer data degradations. Transport efficiency is provided through reducing communication overhead by eliminating redundant information in IP headers. Additional compression can be achieved by reducing redundant information in the payload data, using ZLIB compression.

There are four options with data compression:

1. IP Header and ZLIB compression (default setting)
2. IP Header only
3. ZLIB compression only
4. no compression

To enable PEP, when logged in as Administrator, from the configuration page, select the PEP checkbox.

To disable PEP, de-select the checkbox.

To configure Compression, when logged in as Administrator, from the configuration page, select which option you want from the dropdown menu.

3.8 Firewall (Available in versions AO12001 and higher)

The Iridium Pilot comes with an integrated Firewall, referred to as the Iridium Pilot ISU IP address white listing feature. There is an associated web interface to assist in configuring the feature. When the system is shipped, the default setting is for the feature to be disabled.

When enabled, the IP address white listing feature restricts mobile originated IP links to the set of IP addresses specified in the white list. Mobile terminated links are allowed from any IP address.

The maximum number of IP addresses that can be specified in the white list is 12.

If you are using Static IPs for DNS, or Iridium DNS servers, then the addresses must be added to the White List filtering. For Iridium DNS servers use:

- 10.20.20.30
- 10.20.20.40

Otherwise, the end user is unable to utilize a domain name, since the lookup to the DNS servers will be blocked. Due to this requirement, the maximum number of entries is 10, since there are 2 DNS servers.

Configuration of the white list is performed through the Pilot ISU's configuration web page under admin or gateway login.

To access the IP address white list configuration:

1. Login to the ISU to configure as either admin or gateway.
2. Navigate to the Configuration web page.
3. On the page you will see the White List Configuration section:

Figure 3.13



Windows and Windows XP are either registered trademarks or trademarks of Microsoft Corporation in the United States and/or other countries.

To add an IP address:

1. Click the Add Address button.
2. This will take you to a page that allows you to enter an IP address:

Figure 3.14



Windows and Windows XP are either registered trademarks or trademarks of Microsoft Corporation in the United States and/or other countries.

3. Enter an IP address and click OK.
4. You will be re-directed back to the Configuration page where the IP address will be visible in the White List Configuration section.

Figure 3.15

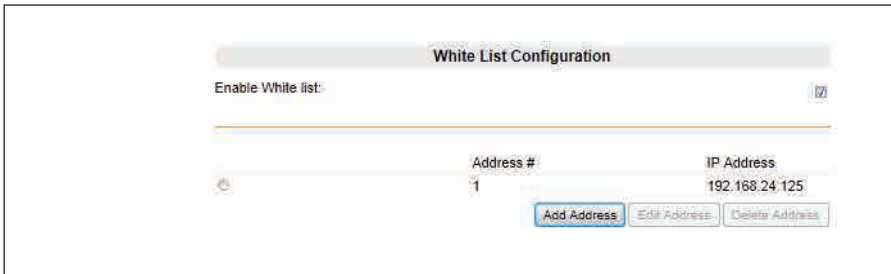


Windows and Windows XP are either registered trademarks or trademarks of Microsoft Corporation in the United States and/or other countries.

To enable the white listing feature:

1. Check the Enable White List checkbox:

Figure 3.16



Windows and Windows XP are either registered trademarks or trademarks of Microsoft Corporation in the United States and/or other countries.

2. IP address white listing is now enabled and only the IP address entered will be accessible from the Pilot ISU. From the main status page, the feature will appear as shown when IP White Listing feature is enabled and no attempts are being made outside of the trusted list.

Figure 3.17



Windows and Windows XP are either registered trademarks or trademarks of Microsoft Corporation in the United States and/or other countries.

From the main status page, the feature will appear as shown when IP White Listing feature is enabled and attempts are being made to a single destination outside of the trusted list.

- a. Timestamp reflects the time in GMT, of the last attempt that was made to reach the IP address indicated, that is NOT on the trusted list.

Figure 3.18



Windows and Windows XP are either registered trademarks or trademarks of Microsoft Corporation in the United States and/or other countries.

From the main status page, the feature will appear as shown when IP White Listing feature is enabled and attempts are being made to multiple destinations outside of the trusted list.

- a. Timestamp reflects the last time an attempt was made to reach the IP address indicated, that is NOT on the white list.
- b. Max number of entries shown will be 5.
- c. These entries are “cleared”, if the ISU is reset, or if attempts to access more than 5 blocked destinations. The oldest entry is then removed.

Figure 3.19

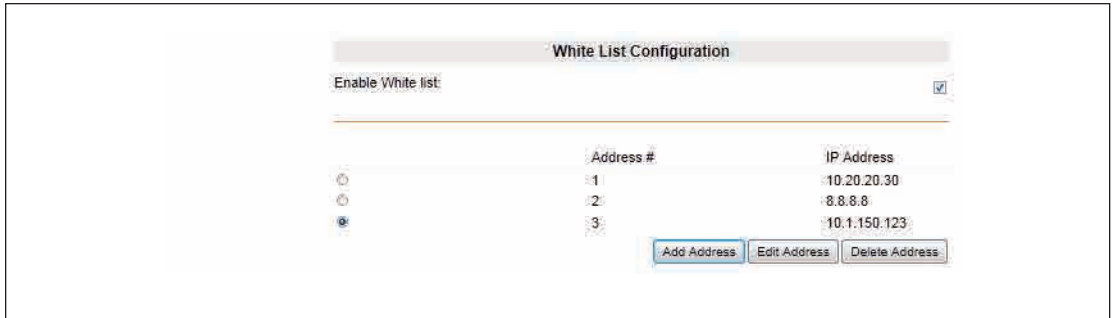


Windows and Windows XP are either registered trademarks or trademarks of Microsoft Corporation in the United States and/or other countries.

To disable IP address white listing

1. Uncheck the Enable White List checkbox.
2. IP addresses are removed from the list by selecting the radio button by the desired address and clicking the Delete Address button:

Figure 3.20



Windows and Windows XP are either registered trademarks or trademarks of Microsoft Corporation in the United States and/or other countries.

3. On the subsequent web page click OK and the address will be removed from the table:

Figure 3.21



Windows and Windows XP are either registered trademarks or trademarks of Microsoft Corporation in the United States and/or other countries.

From the main status page, the disabled feature will appear as IP White Listing feature Disabled, as shown below:

Figure 3.22

The screenshot displays the Iridium status page with the following sections and data:

- Navigation:** status, counters, diagnostics, configuration, admin, password
- status:**
 - LEDs:** Power, Status, Signal, GPS, Data, Handset 1, Handset 2, Handset 3
 - Signal Strength:** Signal Strength (graph), Maximum Bandwidth: 128 kbps
 - SIM:** Installed: Yes, Errors: no
 - GPS:** Status: GPS SPS mode, fix valid; Latitude: 38:55.435; Longitude: -77:13.366
 - Satellite Connection:** Connected: True; Access denial cause: None; Connection attempts: 685; Connections: 165; Connections released: 231; Connections dropped: 454
 - Blocked Data:** IP White List: Disabled
 - Voice Lines:**

Type	Number	Voice Mail
#1 Standard	881677700468	no
#2 Standard	881677700469	no
#3 Crew	N/A	N/A

© 2013 Iridium Communications Inc.

Windows and Windows XP are either registered trademarks or trademarks of Microsoft Corporation in the United States and/or other countries.

3.9 Bulk Configuration (Available in versions AO12001 and higher)

The Iridium Pilot comes with the Bulk Configuration Tool, which allows Solutions Partners and end users to configure multiple Iridium Pilot units being deployed across multiple locations.

Bulk configuration provides an easy way to fully configure a Pilot IBSU by applying a configuration defined by a plain text file. The bulk configuration file format consists of several lines where each line describes a single configurable element and is of the form:

ID	value
Admin_Password	admin
IP_Address	192.168.0.1
DHCPS_Enabled	enabled
Compression_Mask	0x07
Port_Forward_Rule_1	UDP 192.168.0.5 55 66 yes

Admin_Password – String

IP_Address – IP Address

DHCPS_Enabled – Enumeration (“enabled” or “disabled”)

Compression_Mask – Integer (in hex format)

Port_Forward_Rule_1 – Record made up of Enumeration (“UDP” or “TCP”), IP Address, Integer, Integer and Enumeration (“yes” OR “NO”).

3.9.1 Bulk Configuration File

The ID is a string that identifies the configurable item to configure and value is the value to apply. The bulk configuration file supports several types of values: integer, string, enumeration, IP address and record.

VALUE	Description
Integer	An integer value can be in either decimal (e.g. 123) or hexadecimal (e.g. 0xABC) format.
String	A sequence of characters possibly surrounded by double quotes, quotes are required if the string contains spaces.
Enumeration	One of a fixed number of predefined strings, a string enumeration value may contain spaces if it is enclosed in quotes.
IP Address	Four decimal integers each separated from its neighbours by a single dot.
Record	An element that is composed of a fixed number of fields, each field is a value each of which is an Integer, String, Enumeration or IP Address the order the values appear is predefined.

3.9.2 Element Definitions

Below is a description of the valid element IDs and the format expected for their associated configuration value.

ELEMENT	DESCRIPTION	EXAMPLE
Admin_Password	Configures the administrator's password for the ISU, takes a string as input.	Admin_Password password
IP_Address	Configures the IP address of the ISU, takes an IP address as input	IP_Address 192.168.0.1
Subnet_Mask	Configures the subnet mask of the ISU, takes an IP address as input.	
DHCPS_Enabled	Enables or disables the DHCP server functionality of the ISU, takes an enumeration of the format "enabled" or "disabled" as input.	DHCPS_Enabled disabled
DHCPS_IP_Start	Configures the start of the IP address range DHCP will allocate addresses from if enabled, takes an IP address as input.	DHCPS_IP_Start 192.168.0.2
DHCPS_IP_End	Configures the end of the IP address range DHCP will allocate addresses from if enabled, takes an IP address as input.	DHCPS_IP_End 192.168.0.10
DNS_Enabled	Enables or disables the DNS forwarding functionality of the ISU, takes an enumeration of the format "enabled" or "disabled" as input.	DNS_Enabled enabled
Port_Forward_Rule_X	Configures one of the 15 port forwarding rules on an ISU, takes a record of the following format: <ul style="list-style-type: none"> • IP address • Internal port number • External port number • Protocol (enumeration "UDP" or "TCP") • In use (enumeration "yes" or "no") 	Port_Forward_Rule_1 192.168.0.5 55 66 TCP yes
<p>NOTE: Configured port forwarding rules must be in a continuous block starting with rule 1, otherwise unexpected behaviour may occur. For example configuring rules 1,2,3,4 would be fine, but configuring 1,2,8,9 would be wrong as would configuring rules 3,4,5,6,7 in addition.</p>		

ELEMENT	DESCRIPTION	EXAMPLE
Localization	Configures the localisation setting of the ISU, takes an enumeration with one of the following possible values: "USA, Canada" "UK, Ireland" "Germany, France, Italy" "Spain, Portugal" China Japan	Localisation "Germany, France, Italy"
Whitelist_Address_X	Configures one of the 12 white listed IP addresses, takes an IP address.	Whitelist_Address_1 123.456.789.123
Note: Configured white list addresses must be in a continuous block starting with rule 1, otherwise unexpected behaviour may occur. For example configuring addresses 1,2,3,4 would be fine, but configuring 1,2,8,9 would be wrong as would configuring rules 3,4,5,6,7 in addition.		
Whitelist_Enable	Enables or disables the use of the IP address white list, takes an enumeration of the format "enabled" or "disabled" as input.	Whitelist_Enable disabled
Whitelist_Size	Configures the number of configured white listed IP addresses, takes an integer.	Whitelist_Size 4
Note: The size configured here must match the number of Whitelist_Address_X entries in the configuration file otherwise unexpected behaviour may occur.		
Compression_Mask	Enables IP header compression, data compression and the Performance Enhancing Proxy (PEP), takes an integer. This is a bit mask of the services to enable: 0x01 – IP header compression enabled 0x02 – ZLIB data compression enabled 0x04 – PEP enabled	
Firmware_Notification	Enables or disables the new firmware available notification on the ISU's diagnostics web page, takes an enumeration of the format "enabled" or "disabled" as input.	Firmware_Notification enabled

3.9.3 Uploading the Configuration

A configuration file can be uploaded to a Pilot IBSU in two ways, either via the IBSU's configuration web page or using the firmware upgrade tool.

To upload a configuration file via the IBSU web pages:

1. Login to the ISU web pages as an administrator
2. Navigate to the Configuration page
3. Locate the Bulk Configuration section at the bottom of the page.

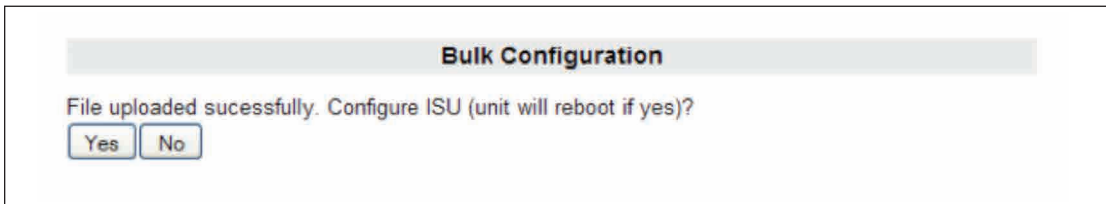
Figure 3.23



Windows and Windows XP are either registered trademarks or trademarks of Microsoft Corporation in the United States and/or other countries.

4. Click on the browse button and select a Pilot configuration file from the dialog box.
5. Click Upload
6. When asked if you want to configure the ISU click yes

Figure 3.24



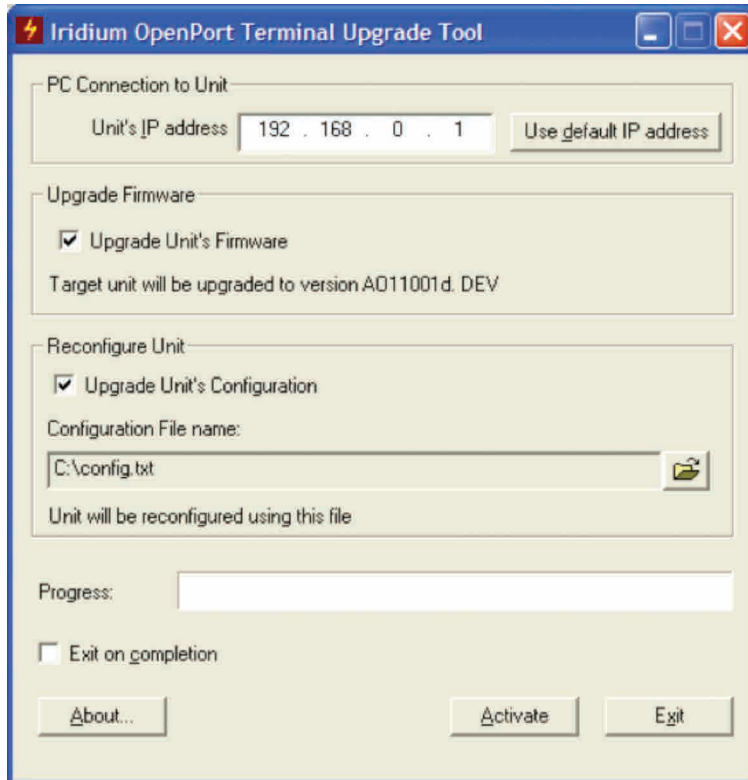
Windows and Windows XP are either registered trademarks or trademarks of Microsoft Corporation in the United States and/or other countries.

7. The new configuration will be applied and the ISU will reboot.

To upload a configuration file from the IBSU firmware upgrade tool:

1. Open the ISU firmware upgrade tool (must be AO11001 or later)
2. Enter the IP address of the ISU to configure
3. Select whether or not to upgrade the ISU's firmware by selecting or deselecting the Upgrade Unit's Firmware check box. Note that if the ISU's current firmware is older than AO11001 then this must be checked for the configuration process to work.

Figure 3.25



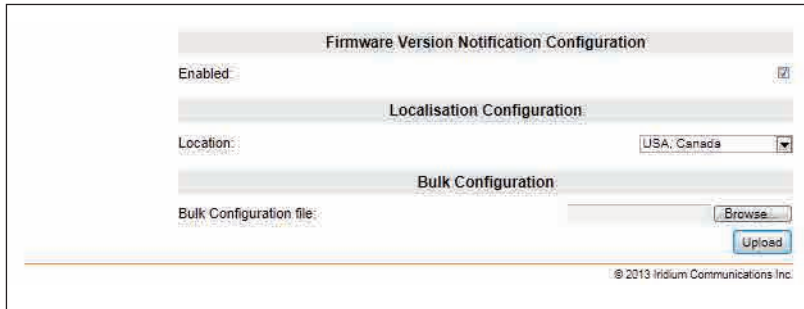
4. Check the Upgrade Unit's Configuration check box.
5. Click on the file browse icon in the Reconfigure Unit box.
6. Select the configuration file from the dialog box.
7. Click Activate.

3.10 New Firmware Notification (available in version A012001 and higher)

The Iridium Pilot comes with a New Firmware Notification feature, which allows you to manage the firmware upgrade process, as detailed in section 4.3 of this User Manual. An automated notification is provided on the Device Configuration page of the IBSU GUI, indicating a newer version is available.

To enable this feature, when logged in as Administrator, under Configuration, Select the checkbox.

Figure 3.26



The screenshot shows a web-based configuration interface with three main sections:

- Firmware Version Notification Configuration:** Contains a checkbox labeled "Enabled" which is checked.
- Localisation Configuration:** Contains a label "Location:" followed by a dropdown menu currently set to "USA; Canada".
- Bulk Configuration:** Contains a label "Bulk Configuration file:" followed by a text input field, a "Browse..." button, and an "Upload" button.

At the bottom right of the page, there is a copyright notice: "© 2013 Iridium Communications Inc."

You must contact your Iridium Solutions Provider to be upgraded.

To disable this feature, when logged in as Administrator, under Configuration, de-select the checkbox.

Section IV – System Operation

4.0 System Operation

Now that the system has been set up and configured, it is ready for use. This chapter provides details on how to use the Iridium Pilot system.

4.1 Data Operation

Prior to operation, the Iridium Pilot unit must be installed, provisioned, and switched on.

All status lights should be nominal.

- Power LED must be green. Power is being supplied to the BDE and it is switched on.
- Status LED is amber. BDE and ADE can communicate and are sitting idle. This light will turn green once the unit goes online.
- Signal LED is amber or green. The unit can “see” the satellite network. A red signal light indicates no signal.
- GPS LED is green. The unit has received the necessary GPS information required to operate.
- Data and Voice port lights are green. Provisioning details have successfully been received from the network and access to the service has been granted. If the unit has been denied access then the lights will be amber.

Accessing the Web

As long as your data port is provisioned and the proper physical connections made, access the Internet simply by starting your web browser. The IBSU allows you complete functionality to upload and download data, web pages, and email. Note: Large files or graphic intense web pages will take longer to transfer or display.

Note: Configuring the system and full diagnostics can only be done by the System Administrator and requires a login password. The default user name and password is “admin”. Change the password if desired.

Important

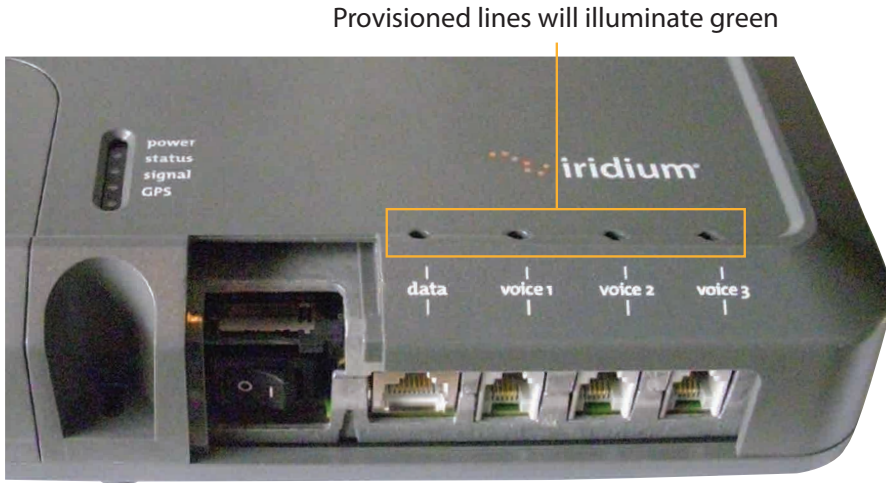
The Iridium Pilot unit supports “connect on demand” and will make a connection across the Iridium network if a data device tries to access an address outside the local area network. It is the user’s responsibility to secure the system from outside access. Ensure proper security (e.g.: firewall, virus protection, encryption) is in place before using the system.

4.2 Telephony Operation

The BDE provides three connectors for POTS handsets, which can be used simultaneously. In order to make or receive a phone call you must have a valid SIM installed in the BDE.

Types of voice lines available are Standard or Crew. There are 3 voice lines available on the BDE and each can be provisioned with services. The BDE will indicate (illuminate green) the lines that have been provisioned.

Figure 4.0



Note: If none of the data or voice LEDs are green then it may be that no services have been provisioned. If they are amber, you may be denied access to the Iridium network. See Troubleshooting section for details on resolving this issue.

Voice calls can be placed using an Iridium provided handset or a standard “POTS” phone that is plugged into the BDE. Telephony calls on a standard line can be placed by dialing the country code followed by the number and a “#” symbol. Iridium Pilot does not require a “+” or “00” prior to entering the country code. Crew calls require the use of the pre-programmed buttons on the crew handset Iridium provides.



Normal Handset
& 2 m RJ-11 Cable

Standard Handset

The 3 handset interfaces are POTS interfaces, with RJ11 connectors. The Iridium Pilot unit's audio has been optimized to work with the handsets provided by Iridium.

Has to be connected to a line that has been provisioned as standard line.

Normal dialing (no "+" or "00" required)

Message waiting light

The Captain's handset can have a pin enabled in provisioning if the user desires.

Can receive MT calls.



Crew's Handset
& 2 m RJ-11 Cable

Crew's Handset

Iridium has a crew phone available with pre-programmed language buttons for use with scratch cards.

Has to be connected to a line that has been provisioned as 'crew' line.

Emergency calls are supported.

These handsets can ONLY make scratch card calls. There are controls in the ISU to block other call types.

MT calls not supported

Normal Dialing

(No '+' or '00' required)

Voice Call from Handset

A voice line can be configured to one of two line types, A crew line which must use an Iridium Pilot Crew handset, or a Standard line:

Follow these steps when calling from a Standard line:

1. Connect the handset to the BDE.
2. Type in the country code, the phone number required, ending with the # key.

For example:

country code + local phone number + #

Voice Call Using Iridium Prepaid Platform (Iridium GoChat™)

Iridium Pilot uses a dedicated phone for crew calling which requires an Iridium GoChat card (see your service provider for information on how to purchase an Iridium GoChat card). Placing a call requires pressing a dedicated speed-dial button, then entering the phone number followed by the #. At the prompt enter your scratch card pin number. Additional instructions are listed on each crew phone.

Follow these steps when calling using Iridium GoChat™:

1. Connect the handset to the BDE.
2. Press the dedicated speed-dial button.
3. Type in the country code, followed by the phone number, then the # key.
4. At the prompt enter your scratch card pin number.

For example:

country code + local phone number + #

Voice Calling Using Iridium Prepaid Platform (Iridium GoChat™) and User Supplied Phone

If a user supplied phone has been installed with the system, then the following procedure must be followed in order to use the GoChat cards

1. Connect the user supplied handset to the BDE
2. Dial the Language Short Code desired for the GoChat audio prompts as per the table below and press #.
3. Type in the county code, followed by the phone number, then press the # key.
4. At the prompt, enter your GoChat scratch card PIN number.

For Example:

GoChat Language Short Code +#+country code+local phone number+#+PIN

"Short Code Language" Dial code then press #		
Short Code	Language	Status
2881	English	Implemented
2882	Tagalog	Implemented
2883	Spanish	Future release
2884	Portuguese	Future release
2885	Greek	Future release
2886	Russian	Future release
2887	Ukrainian	Future release
2888	English	Implemented
2889	Japanese	Implemented
2890	Mandarin	Implemented
2891	Thai	Future release
2892	Hindi	Future release

PIN Feature

The PIN feature is only available for a “Standard” line.

- To disable PIN, dial *70*<PIN>#
- To enable PIN, dial *71*<PIN>#
- To change PIN, dial *72*<old PIN>*<new PIN>*<new PIN>#
- To change AND enable PIN, dial *73*<old PIN>*<new PIN>*<new PIN>#

If PIN is enabled, a user making call will need to enter PIN before other dialed digits; e.g.,

- <PIN><phone number>#

Regardless if PIN is enabled or not, PIN is NEVER required for emergency calls and supplementary service code (including PIN feature) dialing.

Call Barring (Blocking)

Call Barring is supported to block all incoming or all outgoing calls. A 4- digit password is used for all Call Barring operations.

Outgoing Call Barring

Note: There is only one password for Standard and Supplemental Service (default password: 0000).

- Activation: dial *33* <password> #
- Deactivation: dial *34* <password> #
- Check Status: dial *33# [A prompt will be played indicating if Outgoing call barring is enabled.]

Incoming Call Barring

- Activation: dial *35* <password> #
- Deactivation: dial *36* <password> #
- Check Status: dial *35# [A prompt will be played indicating if Incoming call barring is enabled.]

Call Forwarding

Iridium Pilot supports Call Forward Unconditional, Call Forward Busy, Call Forward No Answer, and Call Forward Not Reachable. The default number for call forwarding is the Voice Mail number of the phone line.

Call Forward Unconditional

Forward all incoming calls to another number. All calls will be forwarded to the registered number.

- Register: dial *21* <number> # [Specifies the phone number for Call Forward Unconditional.]
- Activation: dial *21#
- Deactivation: dial *22#
- Check Status: dial *23# [A voice prompt will be played indicating if Call Forward Unconditional is enabled and the number that is registered to forward calls.]

Call Forward Busy

Forward incoming calls if the phone line is currently in a call.

- Register: dial *67* <number> # [Specifies the phone number for Call Forward Busy.]
- Activation: dial *67#
- Deactivation: dial *68#
- Check Status: dial *69# [A voice prompt will be played indicating if Call Forward Busy is enabled and the number that is registered to forward calls.]

Call Forward No Answer

Forwards incoming calls if the phone line does not answer in a specified amount of time.

- Register: dial *61* <number>* <timeout> # [Specifies the number and timeout (in seconds) for Call Forward No Answer. If an incoming call is not answered by the unit in the time specified in the registration, the call is forwarded.]
- Activation: dial *61#
- Deactivation: dial *62#
- Check Status: dial *63# [A voice prompt will be played indicating if Call Forward No Answer is enabled and the number that is registered to forward calls.]

Call Forward Not Reachable

Forwards incoming calls after no response in reaching the Iridium Pilot unit (e.g., unit is turned off).

- Register: dial *24* <number> # [Specifies the number to forward to if there is no response in reaching the unit.]
- Activation: dial *25#
- Deactivation: dial *26#
- Check Status: dial *27# [A voice prompt will be played indicating if Call Forward Not Reachable is enabled and the number that is registered to forward calls.]

Call Forwarding Precedence

Call Forward Unconditional takes precedence, then Call Forward Busy, then Call Forward Not Reachable, then Call Forward No Answer. When a status check command is sent, only the highest priority active Call Forwarding is reported back.

Cancel all call forwarding – Cancels any and all types of call forwarding, including sending a call to Voice Mail.

- *002# - This command deactivates all call forwarding.

Voice Mail

If you have subscribed to Voice Mail then you will be notified that a Voice Mail is waiting for you in three possible ways:

- Interrupted “stuttering” dial tone whenever the user picks up the phone to make an outgoing call
- Message Waiting LED on the phone (if using the Iridium Standard Handset)
- On IBSU Status Page (see Section 7, System Administration)

One Voice Mailbox is provisioned for each subscriber line provisioned as a Standard line. No Voice Mail box is provided for a Crew line.

To access your Voice Mailbox from inside the system, a user can dial *86#. The user will be able to access the Voice Mail system to check and retrieve Voice Mail messages in the language settings of the subscriber line. On an Iridium Standard Handset the user can retrieve the Voice Mail by pressing the red Voice Mail Notification button at the bottom of the phone.

To access your Voice Mailbox from outside the system, dial your assigned phone number and when you hear your greeting, press the # button and then enter your password. When calling from outside the system the Voice Mail system will default to English.

New Voice Mail Commands

<p>1 – Listen to New messages</p> <ul style="list-style-type: none"> 1-Replay 2-Save 3-Delete 4-Skip to next message 5-Date & Time info 9-Previous Menu 	<p>2 – Listen to Saved Messages</p> <ul style="list-style-type: none"> 1-Replay 2-Save 3-Delete 4-Skip to next message 5-Date & Time info 9-Previous Menu
<p>3 – Personal Options</p> <ul style="list-style-type: none"> 1-Administrative Options <ul style="list-style-type: none"> 1-Change voice mail password 9-Previous Menu 2-Personal Greetings <ul style="list-style-type: none"> 1-Record Personal Greetings <ul style="list-style-type: none"> 1-Listen, 2-Save, 3-ReRecord, 4-Delete 2-Change to Default Personal Greeting 3-Record your name, also used in Auto Attendant Directory <ul style="list-style-type: none"> 1-Listen, 2-Save, 3-ReRecord, 4-Delete 9-Previous Menu 9-Previous Menu 	<p>9 – Disconnect</p>

4.3 Firmware Upgrades

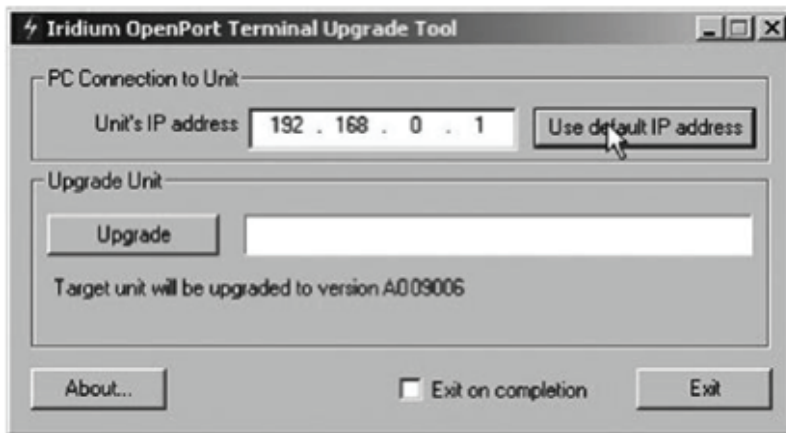
To upgrade the software you need:

- A Windows®-based PC
- Standard Ethernet cable
- Iridium Pilot Terminal Upgrade Tool executable software

Follow these steps to upgrade the software:

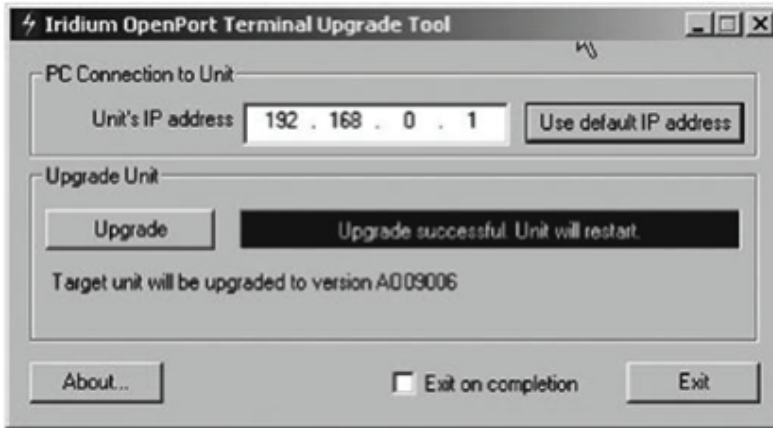
1. Connect PC to Iridium Pilot data port with a standard Ethernet cable.
2. Open a browser and verify connectivity with the Iridium Pilot unit by navigating to 192.168.0.1, which is the default IP address assigned to all Iridium Pilot units at the factory. If the default has been changed, enter the new IP address of the terminal.
3. If you see the Iridium Pilot status web page, proceed to step 4. Otherwise, you may need to configure TCP/IP properties in your computer – please refer to Section 4.12 for detailed instructions on computer setup.
4. Double click the Iridium Pilot Upgrade tool executable. The following window will appear. Enter the IP address of the Iridium Pilot unit.

Figure 4.2



5. Click the "Upgrade" button to start the upgrade process. The progress bar will move from 0 to 100 as the upgrade takes place. Once the upgrade process is complete, the message "Upgrade successful. Power cycle unit" will appear.

Figure 4.3



Microsoft product screenshot(s) reprinted with permission from Microsoft Corporation.

6. Turn the unit off for 30 seconds and then turn it on again.
7. To verify that the new software version was installed, connect to the Iridium Pilot Admin web page (see step 2), and click "diagnostics". The software version is displayed on this page.

Section V – TROUBLESHOOTING

5.0 Troubleshooting

Need to isolate problem to:

- ADE
- BDE
- Cable
- AC Power Supply
- Install Location (RF interference, physical obstruction)
- Configuration (of ISU, IP network or provisioning)

There are three main sources of information for troubleshooting:

1. The IBSU Status Web Pages (default address <http://192.168.0.1>)
2. BDE LEDs (also found on Status web page)
3. Site Survey Tool
4. Antenna Utility

5.1 LED Troubleshooting Charts

LED	Off	Green	Green Flashing	Amber	Red	Red Flashing
power	No power supplied to BDE	Power supplied to BDE and BDE switched on. Power is being passed to ADE.	Not Used	Power supplied to BDE, BDE switched off	Not Used	Not Used
status	Not Used	Idle: connected to the Iridium network but no traffic	Active: Voice or data is being transferred to/ from the Iridium network	Not Used	System Unavailable	BDE cannot communicate with ADE – check connections.
signal	Not Used	Strong network signal detected	Not Used	Weak network signal detected	No network signal detected.	Not Used
GPS	Not Used	GPS signal available to ADE	Not Used	Not Used	No GPS signal	Not Used
data	Data port not provisioned.	Data port provisioned for use.	Flashing when data call in progress	Access to network denied - see Web Page for details.	SIM problem	Not Used
voice 1	Voice port 1 not provisioned. * Or handset off hook.	Voice port 1 provisioned for use.	Incoming call (ringing) or call in progress.	Access to network denied - see Web Page for details.	SIM problem	Not Used
voice 2	Voice port 2 not provisioned. *Or handset off hook.	Voice port 2 provisioned for use.	Incoming call (ringing) or call in progress.	Access to network denied - see Web Page for details.	SIM problem	Not Used
voice 3	Voice port 3 not provisioned. *Or handset off hook.	Voice port 3 provisioned for use.	Incoming call (ringing) or call in progress.	Access to network denied - see Web Page for details.	SIM problem	Not Used

*The BDE does not know what services are provisioned until it has connected to the network so this LED will be off at initial power up.

Suggested actions for the following fault conditions:

LED	Color	Reason	Suggested Action
power	Off	No power supplied to BDE	Get a qualified person to check the power being supplied to the BDE. It should be between 11 – 32VDC at the input to the BDE and capable of providing up to 50W.
power	Amber	Power supplied to BDE, BDE switched off	Remove the SIM cover and ensure that the on/off switch is in the on position. When this switch in the on position the LED should be green. If the switch is on and this LED remains amber then call your service provider for assistance.
status	Red Flashing	BDE cannot communicate with ADE – check connections.	Get a qualified person to check the connection between the BDE and ADE, this should include the connections at the BDE and ADE and the entire cable between them.
signal	Red	No network signal detected.	It is valid for this LED to go red for short periods of time but it should not remain red. If it remains red it implies that there is a problem with the equipment. Please call your service provider and report all the information you can see on the web pages as well as the LED colors.
GPS	Red	No GPS signal	You may be in an area where a GPS signal cannot be received, if the vessel moves and the problem persists then contact your service provider and report that internal GPS has failed.
data	Amber	Access to network denied - see Web Page for details.	Access to the Iridium network has been denied, there are a number of reasons for this below for details (see Access Denied table, page 9.3).
data	Red	SIM problem	Check SIM inserted correctly and SIM lock on SIMholder pushed across. Check you have a valid Iridium Pilot SIM.
voice	Amber	Access to network denied - see Web Page for details.	Access to the Iridium network has been denied, there are a number of reasons for this below for details (see Access Denied table, page 9.3).
voice	Red	SIM problem	Check SIM inserted correctly and SIM lock on SIMholder pushed across. Check you have a valid Iridium Pilot SIM.

Power Diagnosis

Check power (multimeter may be useful)

- BDE power LED should be amber when BDE switched OFF but power supplied. If not check power supply input to BDE is between 100/240VAC into AC PSU which in turn should be providing 24VDC or between 11VDC and 32VDC if using DC supply.
- When BDE is switched on power LED should go green. If it doesn't then the internal power circuitry of the BDE is broken, replace BDE. *initial start-up LED will be amber which indicates power to the unit just not switched "on".

Note: If the power LED is amber it means some power is being provided to the BDE, but not necessarily enough. A voltmeter can be used to check this.

ADE/BDE Communications

A flashing red status light indicates the BDE is unable to communicate with the ADE.

1. Disconnect both ends of the ADE/BDE cable and test with an Ethernet cable tester.
 - An adaptor cable is required to convert the ADE cable end to a RJ45 for easier testing. This may need to be built.
2. Inspect cable for damage. Frayed or spliced cables should be replaced.
3. Inspect ADE and BDE ports for damage.
4. Disconnect power and test input levels.
5. For replacement, if cable tests OK in step 1 then investigate the BDE first and then the ADE for possible issues. Retest setup after each component has been swapped.

Signal Strength

Check signal strength LED or the signal strength indicator on the status web page.

Make a voice or data call from the Iridium Pilot unit to double check.

Observe the signal LED status over time. Does the LED change color frequently? Is there a pattern? Is the signal LED red for longer than 5 to 10 minutes?

It could be that the install location suffers from intense RF interference or physical obstructions within line of sight to the sky.

Site Survey Tool

- Site Survey Tool – This application puts the Iridium Pilot unit into a test mode and then proceeds to record the noise level on all possible channels.
- Needs to run on a Windows PC on the same subnet as the ISU (i.e. 192.168.0.xxx)
- Copy the exe and dll to a folder you create on the PC desktop, it will store the results in the same directory.
- Browse to directory and select SurveyTool.exe to run.
- The program needs to know the Iridium Pilot IP address, you will be able to select the default IP address or enter an alternative.
- Once the survey begins, graph data will begin to populate. There are 251 channels to test so it can take several minutes.

Note: If you do not stop or allow the survey tool to complete, the Iridium Pilot unit will be left in test mode. You need to power cycle the unit to force it out of test mode.

- Once the test is stopped, click on File -> SaveAs to create a .csv file of the data. This output .csv file can then be analyzed and interpreted by Iridium.
- The survey will record the max and mean for the received signal strength indicator (RSSI) that it “hears.” It will do this on each channel across all 7 antenna elements.
- Spikes in the resulting graph indicate channels unavailable to Iridium Pilot due to other sources transmitting on them. The more spikes, the more RF interference present.

Access Denied

Denial of access will be indicated by the voice and data LEDs on the BDE illuminating Amber. Access to the Iridium network may be denied for a number of reasons. The following items contain information that you may be asked to provide when contacting your service provider.

Reason	Suggested Action
TMSI invalid	Unit will automatically try to access the network using the IMSI.
IMSI invalid	Call service provider.
Authentication Failure	Check SIM status on Status web page, check using a valid SIM card. If all ok call service provider.
IMEI Blacklisted	Call service provider
Indeterminable Location	Check GPS LED on BDE. If LED is green, check GPS status on web page. Contact Service Provider with this information and denial information.
Restricted Area	Wait until move into different geographical area

Antenna Utility (Available in versions AO12001 and higher)

The Antenna utility allows you to effectively troubleshoot and identify antenna shadowing or interference problems.

The Antenna utility requires Admin login. You must login as Admin from the Diagnostics page of the IBSU GUI in order to see the Antenna array (see Figure 3.6).

Section VI – APPENDICES

Appendix A – Regulatory

FCC Declaration for 9701

This equipment has been tested and found to comply with the limits for a Class B digital device, pursuant to Part 15 of the FCC Rules. These limits are designed to provide reasonable protection against harmful interference in a residential installation.

This equipment generates, uses and can radiate radio frequency energy and, if not installed and used in accordance with the instructions, may cause harmful interference to radio communications. However, there is no guarantee that interference will not occur in a particular installation.

If this equipment does cause harmful interference to radio or television reception, which can be determined by turning the equipment Off and On, the user is encouraged to try to correct the interference by one or more of the following measures:

- Reorient or relocate the receiving antenna.
- Increase the separation between the equipment and receiver.
- Connect the equipment into an outlet on a circuit different from that to which the receiver is connected.
- Consult the dealer or an experienced radio/TV technician for help.

Modifications to this device not expressly approved by Iridium Satellite LLC may void authority granted under the rules of the Federal Communications Commission to operate this device.

Industry Canada

This product is compliant with Industry Canada RSS-102 for RF Exposure.

The 9701 BDE is a Class B digital apparatus and complies with Canadian ICES-003.

Cet appareil numérique de la classe B est conforme à la norme NMB-003 du Canada.

Declaration of Conformity

On behalf of Iridium Communication Incorporated, I declare under penalty of perjury that the following device complies with the requirements of the United States Federal Communication Commission pertaining to a personal computing peripheral device:

Identification: Iridium Broadband Terminal, Below Decks Equipment, Model 9701

Compliance Statement: This device complies with Part 15 of the FCC Rules. Operation is subject to the following two conditions: (1) this device may not cause harmful interference, and (2) this device must accept any interference received, including interference that may cause undesired operation.

Responsible Party: Iridium Communication Inc.
1750 Tysons Boulevard, Suite 1400
McLean, VA 22102
USA

Telephone 1.703.287.7400

Date: 10/02/2013
Oct. 2, 2013



Herrnon Pon
Vice President, Technology
Iridium Communications Inc.

EU Declaration of Conformity

IRIDIUM

Model

**Declaration of Conformity
Model 9801 Broadband Terminal**

Declaration of Conformity – EC Directive

This is to certify that the following equipment complies with all relevant Essential Health and Safety Requirements of the Radio and Telecommunications Terminal Equipment Directive 1999/5/EC and the Low Voltage Directive 73/23/EC as amended by 93/68/EC.

Equipment description	Iridium Model 9801, Broadband Terminal, Above Decks Equipment
Serial numbers tested	900A0K, 900A0L, 900A0M, 900A0N, 900A0P
Manufacturer	Celestica, Johor Senai, Malaysia.
Issue date	15 th August, 2008

The following harmonized standards were applied to the design of the handset:

Low Voltage Directive	Test Report	Report Date
EN 60950-1:2002	SU3664/8725	15 th August 2008
R&TTE Directive - EMC	Test Report	Report Date
EN 301 489-20 V1.2.1 (2002-11) & EN 60945:2002	EU2780/8579	13 th May 2008
R&TTE Directive - Radi	Test Report	Report Date
EN 301 441 V1.1.1 (2000-05)	RU1427/8509 RU1496/8759	2 nd June 2008 3 rd Sept. 2008

The Test Report References above are test reports prepared by TRL Compliance Ltd, Moss View, Nip Lane, Up Holland, West Lancashire, WN89PY, UK

Accreditation references: TRL - UKAS 0728 and BSI FS 21805

The project master file, which contains or references all necessary documents to make up a "technical file" is retained by Iridium satellite, LLC

The Model 9801 Certification is dependent on the following criteria:

1. The Model 9801 is installed and used as described in Model 9801 User Guide
2. The Model 9801 is only used with Model 9701 Below Decks Equipment (BDE)
3. The Model 9801 is manufactured by Celestica or an equivalent competent manufacturer adopting the same process with equivalent quality levels.

I am satisfied that relevant standards have been used in the design, the above documentation exists in the project Master File, and that the product will be labelled with the CE mark before despatch.

Signed  Vice President, Technology

Date Oct. 2, 2013

Appendix B – Specifications

RF Performance		
Frequency of Operation	TX	1616 to 1626.0 MHz
	RX	1616 to 1626.5 MHz
Channelization	FDMA spacing	41.67 KHz
	TDMA Timing	8.3 mS slot in a 90 mS window
	Channels available	64 channels
Maximum ERIP	1 ch (voice)	6.3 watts average power
	64 ch (max data rate)	12.6 watts average power
Modulation	Voice/Data	QPSK
Antenna	Type	6 dual element azimuthal array and 1 zenith element, electronically switched and phase steered
	Polarization	RHCP
	Maximum Gain	+8 dBi
	Beam Width	Hemispheric coverage (60° per element)
	Steering	Automatic solid state
	Coverage	Horizon to horizon
	Roll Motion	provides useful link margin up to roll = 20°
	Maximum Turn Rate	90° / second

Power Requirements		
Main Power (AC)	Voltage	100 - 240 VAC
	Frequency	50/60 Hz
	Output Power	100 W (24 volts @ 4.2 Amps max)
DC input (power module)	DC Input Voltage	11 to 32 VDC
	Power In Standby	18 Watts
	Power During Call	22 Watts
	Power During Data	31 Watts

Environmental Specs		
ADE (Above Deck Equipment)	Enclosure Type	RF-transparent dome-shaped cover and metal base
	Temperature Range	-30 to +70 deg. Celsius
	Relative Humidity	0 to 93% RH
	Enclosure Rating	meets IP56 (high pressure water jets)
	Wind	in excess of 100 mph with proper mounting (see Installation Guide)
BDE (Below Deck Equipment)	Enclosure Rating	IP33 compliant (use inside controlled environment)
	Temperature Range	0 to +50 deg. Celsius

Physical Description		
ADE	Diameter	57.0 cm
	Height	20.0 cm
	Weight	12.5 kg
	Mounting	M10 bolts arranged in a 15 cm diameter bolt circle
BDE	Length	25.0 cm
	Width	19.0 cm
	Height	5.5 cm
	Weight	1.35 kg
	Mounting	Indoor, flat, vertical wall (supports BDE weight)
Power Module	Length	14.0 cm
	Width	5.9 cm
	Height	3.5 cm
	Weight	< 0.5 lb
Interconnect Cable	Length (1)	20 m
	Length (2)	50 m (optional)

User Interfaces		
ADE	BDE Connector	Bulgin Buccaneer IP68 (9-pole fixed plug)
BDE	SIM Card	Furnished by Iridium Service Provider
	Data	10 baseT
	Voice 1	RJ-11 (2 wire) / POTS
	Voice 2	RJ-11 (2 wire) / POTS
	Voice 3	RJ-11 (2 wire) / POTS
	ADE Connector	RJ-45 (proprietary)

Appendix C – Terms and Conditions, Limited Warranty (including Exclusions and Limitations), Software License and Claim Process

Iridium Pilot® Products Terms and Conditions

All sales by Iridium of Iridium Pilot subscriber products (Above Deck Equipment, Below Deck Equipment, and Power Supply) (collectively the “Product”) and accessories (i.e. cables, captain and crew handsets, mounts) (“Accessories”) are subject to and conditioned upon the Purchaser’s acceptance of these Terms and Conditions. Iridium objects to any additional or different terms contained in any documentation used or submitted by buyer unless expressly accepted in writing by Iridium. If any provision of these Terms and Conditions is found invalid under applicable law or court order, all other provisions shall be unaffacted and remain independently binding and valid. The provisions in these Terms and Conditions supersede any contrary provisions in other Iridium documents, including *Iridium OpenPort Product Limited Warranty Policy*.

1. IRIDIUM PILOT LIMITED WARRANTY

Iridium warrants only that the Product, not including Accessories, shall be free from defects in materials and workmanship for a period of sixty (60) months (five (5) years) from the date of sale to the end-user. Iridium Pilot Accessories shall be covered by this Limited Warranty for twelve (12) months (one (1) year). Iridium does not authorize any person to assume or create for it any other obligation or liability in connection with any Product or Accessories.

IRIDIUM MAKES NO OTHER WARRANTY OR GUARANTEE, EXPRESS OR IMPLIED, INCLUDING, WITHOUT LIMITATION, ANY WARRANTY OF MERCHANTABILITY OR FITNESS FOR A PARTICULAR PURPOSE, NON-INFRINGEMENT, SATISFACTORY QUALITY, NON-INTERFERENCE, ACCURACY OF INFORMATIONAL CONTENT, OR ARISING FROM A COURSE OF DEALING, LAW, USAGE, OR TRADE PRACTICE. IN NO EVENT SHALL IRIDIUM BE LIABLE FOR SPECIAL, INCIDENTAL, OR CONSEQUENTIAL DAMAGES ARISING OUT OF OR IN CONNECTION WITH THE PRODUCT OR ACCESSORIES, OR FOR ANY INDEMNIFICATION OF PURCHASER ON ACCOUNT OF ANY CLAIM ASSERTED AGAINST PURCHASER, OR FOR ANY OTHER DAMAGE OF ANY KIND, WHETHER DIRECTLY OR INDIRECTLY RELATED TO THE PRODUCT, ACCESSORIES OR IRIDIUM’S SERVICE. TO THE EXTENT THAT ANY IMPLIED WARRANTY CANNOT BE DISCLAIMED, SUCH WARRANTY SHALL BE LIMITED IN DURATION TO THE EXPRESS LIMITED WARRANTY PERIOD. THIS WARRANTY IS MADE BY IRIDIUM TO THE PURCHASER OF THE PRODUCT AND ACCESSORIES ONLY, AND IT IS NOT ASSIGNABLE OR TRANSFERABLE BY THE PURCHASER. TO THE EXTENT PERMITTED BY LAW, THIS IS IRIDIUM’S SOLE AND COMPLETE WARRANTY FOR THE PRODUCT AND ACCESSORIES. THIS WARRANTY COVERS PRODUCT AND ACCESSORIES ONLY. IRIDIUM MAKES NO WARRANTY AS TO COVERAGE, AVAILABILITY, OR GRADE OF SERVICE PROVIDED BY IRIDIUM SEPARATELY FOR IRIDIUM SATELLITE SERVICES. IRIDIUM ASSUMES NO OBLIGATION OR LIABILITY FOR ADDITIONS OR MODIFICATIONS TO THIS WARRANTY UNLESS MADE IN WRITING AND SIGNED BY AN OFFICER OF IRIDIUM.

This Product and Accessories is covered only by the LIMITED WARRANTY as stated above. To the extent permitted by applicable law, Iridium specifically disclaims any other warranty terms, liabilities, or obligations which may be implicated by sale or purchase of the Product or Accessories outside of the United States. Except as specified in this LIMITED WARRANTY, Products and Accessories are provided “AS IS.”

If you acquired this Product and Accessories in Australia or in New Zealand, this Product and Accessories come with guarantees that cannot be excluded under the Australian Consumer Law or similar legislation in New Zealand. The benefits to a consumer given by the warranty are in addition to other rights and remedies of a consumer under a law in relation to the goods or services to which the warranty relates. Notwithstanding other express terms and other limitations of this Limited Warranty (which other express terms and other limitations are negated by this paragraph, but only to the extent inconsistent with this paragraph, and will not be applied to limit consumer rights under such guarantees), where such guarantees operate, consumers are entitled to a replacement or a refund for a major failure of this Product and Accessories and for compensation for any other reasonably foreseeable loss or damage. Where such guarantees operate, consumers are also entitled to

have this Product and Accessories repaired or replaced if this Product and Accessories fail to be of acceptable quality and the failure does not amount to a major failure. Please follow the instructions as to use and report problems promptly: problems caused by use that is abnormal or contrary to instructions will generally not be covered. You should contact your Product and Accessories provider in relation to problems with the Product and Accessories and Iridium will assist your Product and Accessories provider to resolve them.

2. EXCLUSIONS

A. Product and Accessories Conditions Not Covered By The LIMITED WARRANTY in Section 1 above:

1. Product or Accessories damage caused by the use of equipment not furnished by Iridium, including accessories, power supplies and peripherals.
2. Failures caused by incompatibility of Iridium Product or Accessories used in a combination with equipment not furnished by Iridium.
3. Damage to any equipment not furnished by Iridium.
4. Defects or damage resulting from use of the Product or Accessories in any manner not in accordance with the User Manual or Installation Guide.
5. Damages resulting from accident or neglect, including but not limited to dropping the Product or Accessories on hard surfaces, submersion in water, improper testing, operation, maintenance, installation, adjustment, or any alteration or modification of any kind, including spliced or improperly terminated cables.
6. Scratches or other damage to surfaces or the appearance of externally exposed parts caused by Purchaser's use.

B. The LIMITED WARRANTY in Section 1 of these Terms and Conditions is VOID upon the following:

1. Product integration, installation, maintenance, or service in any manner other than in accordance with the Iridium installation and user documentation furnished with or applicable to the Product or Accessories.
2. Use of ancillary equipment not furnished by Iridium which damages Iridium Product or Accessories.
3. Product or Accessories disassembly, opening, or repair performed by anyone other than an Iridium Authorized Repair Center.
4. Removal, alteration, or obliteration of serial numbers or date tags.
5. Failure to comply with these Terms and Conditions, including Limitations and Conditions of Use in Section 4 below.

3. LIMITED WARRANTY CLAIMS – PURCHASER REMEDIES

At its sole discretion, Iridium shall, at no charge to Purchaser, either repair or replace the Product or Accessories, or refund the purchase price of a Product or Accessories that does not conform to this LIMITED WARRANTY, provided that the Product or Accessories is returned in accordance with the instructions set forth below and within the LIMITED WARRANTY period set forth in Section 1 above. Repair may include the replacement of parts and/or components with functionally equivalent, reconditioned, or new parts and/or components. Product or Accessories that is repaired or replaced in accordance with these Terms and Conditions will be covered by the LIMITED WARRANTY for the balance of the original warranty period, or six (6) months, whichever is longer. A returned Product or Accessories for which a replacement has been provided shall become Iridium's property.

To the extent permitted by applicable law, the remedies under these Terms and Conditions are Purchaser's sole and exclusive remedies. IN NO EVENT SHALL IRIDIUM, INCLUDING ITS LICENSORS AND/OR SUPPLIERS, BE LIABLE FOR ANY AMOUNT IN EXCESS OF THE PURCHASE PRICE OF THE PRODUCT OR ACCESSORIES, OR FOR ANY LOSS OF USE, LOSS OF TIME, INCONVENIENCE, COMMERCIAL LOSS, LOST PROFITS OR SAVINGS, OR OTHER INCIDENTAL, SPECIAL, OR CONSEQUENTIAL DAMAGES ARISING OUT OF OR RELATING TO THE USE OR INABILITY TO USE SUCH PRODUCT REGARDLESS OF NOTICE OF SUCH LOSS.

For warranty claims, questions, repairs, service or for the return of Product or Accessories, contact the Iridium Service Provider or Point-of-Sale. Products and Accessories needing service should be returned to the Purchaser's Service Provider or Point-of-Sale. Purchaser's Service Provider will coordinate warranty service with Iridium to facilitate repair or replacement of the Product or Accessories. All Products and Accessories shipped to Iridium's authorized Global Warranty Center(s) must be shipped with freight and insurance pre-paid. Products and Accessories returned to Iridium must be accompanied by a copy of the Return Material Authorization (RMA), and the RMA number referenced on the outside of the box.

Product and Accessories that are repaired or replaced under the LIMITED WARRANTY shall be returned to Purchaser at Iridium's expense for the freight and insurance, and at Purchaser's expense for any applicable duties or other charges. If you are a consumer entitled to return the Product under statutory guarantee, at your request Iridium will reimburse reasonable shipping costs incurred by you.

4. LIMITATIONS AND CONDITIONS OF USE

In the United States, and subject to availability, emergency calls using 911 or 112 emergency systems, are routed to emergency call centers for response. OUTSIDE OF THE UNITED STATES, EMERGENCY ACCESS NUMBERS SUCH AS 911, 112, AND/OR 999, ARE *UNAVAILABLE ON THE IRIDIUM NETWORK AND MOBILE SATELLITE SERVICE*. Iridium also does not currently support enhanced 911 or 112 services and does not provide information to emergency call centers to identify callers' locations.

Purchaser and all users of the Product and Accessories, including but not limited to the use of the Iridium phone services, in conjunction with 911, 112, or any other emergency or distress call services, both public and privately operated, acknowledge and agree as a condition of the provision of Iridium phone service that they will make no claim in contract, tort, or otherwise, against Iridium for any damages, bodily injury, loss of life, or any other loss arising from unavailability, delay, faultiness, or failures of the Iridium facilities, service, Product or Accessories, including inaccuracies with regard to any user information. Users disclaim any liability against Iridium arising from Iridium's service in exchange for the provision of Iridium's phone service through its Products and Accessories.

As part of providing its service, Iridium may disclose user information, including but not limited to name, address, telephone number and location information, including, where available, the geographic coordinates of equipment, to governmental and quasi-governmental agencies where Iridium deems it necessary in its sole discretion to respond to exigent circumstances or as required by law. Governmental and quasi-governmental agencies shall also be deemed "users" for all purposes of this provision and these Terms and Conditions.

Purchaser shall only use the Products and Accessories in connection with service on the Iridium satellite network using airtime purchased from Purchaser's Iridium Service Provider. Terms and conditions for use of the Iridium system and network airtime are provided separately by Purchaser's Service Provider. Iridium or Purchaser's Service Provider may from time to time change or establish additional terms and conditions. Iridium will attempt to reasonably provide Purchaser with notice of changes in terms and conditions. All terms and conditions will be effective as of the date such changes are made available publicly, and Purchaser's use of the Product or Accessories after such date shall constitute acceptance of new and/or modified terms and conditions.

The Product and Accessories must not be used in connection with any third-party devices, including but not limited to computers, cameras, batteries, GPS devices, recorders or other devices which alter the format of information sent or received by the Product or Accessories, except to the extent that Iridium has tested those devices and certified that their use will have no adverse effect on the Iridium satellite network. All devices approved by Iridium will be advertised and labeled as Certified by Iridium. Only such "Iridium-Approved Devices" may be used with the Product and Accessories and with the Iridium system.

Modification, reverse-engineering, or any attempt to reverse-engineer the Product or Accessories, any component of any Product or Accessories or the manner in which the Product or Accessories connects to, sends information to, receives information from, or otherwise interacts with the Iridium system is strictly prohibited, will void the LIMITED

WARRANTY under Section 1 of these Terms and Conditions, and may result in legal action by Iridium.

5. INDEMNITY

Purchaser agrees to defend, indemnify and hold Iridium and its Service Provider harmless with respect to any claims or actions by any governmental entities or other third parties related to any violation of law with use of the Product or Accessories, misuse of the Product or Accessories under these Terms and Conditions, or any other violation of these Terms and Conditions and further agrees to pay all costs, damages, fines and other amounts incurred by Iridium, or on Iridium's behalf, in the defense of any such claims or actions. Airtime charges remain applicable for any and all misuse of the Product or Accessories.

Failure to comply with these Terms and Conditions, including Limitations and Conditions of Use, will void the LIMITED WARRANTY and Iridium reserves the right to terminate Iridium's service at any time.

6. SOFTWARE LICENSE

The following terms govern Purchaser's access and use of the Iridium or Iridium-supplied software ("Software") contained on the Product or Accessories.

License. Conditioned upon compliance with these Terms and Conditions, Iridium grants to Purchaser a nonexclusive and nontransferable license to use for Purchaser's internal purposes the Software and the Documentation. "Documentation" means written information (whether contained in user or technical manuals, training materials, specifications or otherwise) pertaining to the Software and made available by Iridium with the Software in any manner. Purchaser shall use the Software solely as embedded in (or, if downloaded, as provided via download), for execution on, and for communication via the Iridium network.

No other licenses are granted by implication, estoppel or otherwise.

General Limitations. This is a license, not a transfer of title, to the Software and Documentation, and Iridium retains ownership of all copies of the Software and Documentation. Purchaser acknowledges that the Software and Documentation contain trade secrets of Iridium or its suppliers or licensors, including but not limited to the specific internal design and structure of individual programs and associated interface information. Except as otherwise expressly provided under the Agreement, Purchaser shall have no right, and Purchaser specifically agrees not to:

- i. transfer, assign or sublicense its license rights to any other person or entity (other than in compliance with any Iridium relicensing/transfer policy then in force), or use the Software on unauthorized or secondhand Iridium equipment, and Purchaser acknowledges that any attempted transfer, assignment, sublicense or use shall be void;
- ii. make error corrections to or otherwise modify or adapt the Software or create derivative works based upon the Software, or permit third parties to do the same;
- iii. reverse engineer or decompile, decrypt, disassemble or otherwise reduce the Software to human-readable form, except to the extent otherwise expressly permitted under applicable law notwithstanding this restriction;
- iv. use or permit the Software to be on a service bureau or time sharing basis or otherwise, without the express written authorization of Iridium; or disclose, provide, or otherwise make available trade secrets contained within the Software and Documentation in any form to any third party without the prior written consent of Iridium. Purchaser shall implement reasonable security measures to protect such trade secrets.

To the extent required by law, and at Purchaser's written request, Iridium shall provide Purchaser with the interface information needed to achieve interoperability between the Software and another independently created program, on payment of Iridium's applicable fee, if any. Purchaser shall observe strict obligations of confidentiality with respect to such information and shall use such information in compliance with any applicable terms and conditions upon which Iridium makes such information available.

Software, Upgrades and Additional Copies. For purposes of the Agreement, “Software” shall include (and the terms and conditions of the Agreement shall apply to) computer programs, including firmware, as provided to Purchaser by Iridium or an authorized Iridium reseller, and any upgrades, updates, bug fixes or modified versions thereto (collectively, “Upgrades”) or backup copies of any of the foregoing.

NOTWITHSTANDING ANY OTHER PROVISION OF THESE TERMS AND CONDITIONS: (1) UNLESS AUTHORIZED BY IRIDIUM, PURCHASER HAS NO LICENSE OR RIGHT TO MAKE OR USE ANY ADDITIONAL COPIES OR UPGRADES. IRIDIUM MAY MAKE SOFTWARE AVAILABLE BASED ON ADDITIONAL TERMS; (2) USE OF UPGRADES IS LIMITED TO IRIDIUM PRODUCTS AND ACCESSORIES FOR WHICH PURCHASER IS THE ORIGINAL END USER, PURCHASER OR LESSEE OR OTHERWISE HOLDS A VALID LICENSE TO USE THE SOFTWARE WHICH IS BEING UPGRADED; AND (3) THE MAKING AND USE OF ADDITIONAL COPIES IS LIMITED TO NECESSARY BACKUP PURPOSES ONLY.

Proprietary Notices. Purchaser agrees to maintain and reproduce all copyright and other proprietary notices on all copies, in any form, of the Software in the same form and manner that such copyright and other proprietary notices are included on the Software. Except as expressly authorized in these Terms and Conditions, Purchaser shall not make any copies or duplicates of any Software without the prior written permission of Iridium.

Term and Termination. These Terms and Conditions and the license granted herein shall remain effective until terminated. Purchaser may terminate these Terms and Conditions and the license at any time by destroying all copies of Software and any Documentation. Purchaser’s rights under these Terms and Conditions will terminate immediately without notice from Iridium if Purchaser fails to comply with any provision of these Terms and Conditions. Upon termination, Purchaser shall destroy all copies of Software and Documentation in its possession or control. All confidentiality obligations of Purchaser and all limitations of liability and disclaimers and restrictions of warranty shall survive termination of this Agreement.

Export, Re-Export, Transfer and Use Controls. The Software, Documentation and technology or direct products thereof (hereafter referred to as Software and Technology), supplied by Iridium under these Terms and Conditions are subject to export controls under the laws and regulations of the United States (U.S.). Purchaser shall comply with such laws and regulations governing export, re-export, transfer and use of Iridium Software and Technology and will obtain all required U.S. and local authorizations, permits, or licenses. Iridium and Purchaser each agree to provide the other information, support documents, and assistance as may reasonably be required by the other in connection with securing authorizations or licenses.

U.S. Government End User Purchasers. The Software and Documentation qualify as “commercial items,” as that term is defined at Federal Acquisition Regulation (“FAR”) (48 C.F.R.) 2.101, consisting of “commercial computer software” and “commercial computer software documentation” as such terms are used in FAR 12.212. Consistent with FAR 12.212 and DoD FAR Supp. 227.7202–1 through 227.7202-4, and, notwithstanding any other FAR or other contractual clause to the contrary in any agreement into which these Terms and Conditions may be incorporated, Purchaser may provide to Government end user or, if the sale is direct, Government end user will acquire the Software and Documentation with only those rights set forth in these Terms and Conditions. Use of either the Software or Documentation or both constitutes agreement by the Government that the Software and Documentation are “commercial computer software” and “commercial computer software documentation,” and constitutes acceptance of the rights and restrictions herein.

Iridium Pilot Product and Accessories Warranty Claim Process

1. Overview

This Policy is designed to offer Iridium Pilot customers, **through their Iridium Service Provider (ISP or Service Provider)**, a simple and expeditious support solution for the Iridium Pilot Product and Accessories. Customers and Dealers are encouraged to **contact their Service Provider for Product support**.

Iridium offers multiple solutions for warranty repairs: Standard Return Material Authorization (RMA) and the Global Service Program (GSP).

The Standard RMA requires Iridium to receive the returned Product or Accessories before shipping replacement Product or Accessories. If defective Product or Accessories issued under RMA is not received at the Iridium Global Warranty Center, per RMA, within four (4) months from RMA issuance, the RMA will be cancelled. In the event the defective Product or Accessories still requires return, a new RMA request and issuance must be issued.

An RMA through the GSP requires the Iridium designated field service provider to perform the warranty replacement and RMA process.

2. RMA through the Iridium Global Service Program

Iridium offers warranty replacement for Iridium Pilot Products or Accessories via the Iridium Global Service Program (GSP). The GSP employs full-time technicians trained on Iridium Pilot and marine electronics. This service is available 24 hours a day and can be arranged by contacting your Service Provider. Use of the GSP for warranty repair/replacement is at the discretion of Iridium with authorization from the Service Provider.

The GSP technician will conduct all troubleshooting, remove and/or replace and RMA activities on behalf of the Service Provider.

GSP warranty support and services are provided at no cost, to the Service Provider or customer, in the ports identified as part of the Iridium Global Service Program. Warranty support in locations outside the GSP network is available upon request. Additional charges may apply for out-of-network GSP activities. Additionally, charges may apply for GSP activities in which Iridium deems the Product and/or Accessory to be out of warranty.

3. Limited Warranty Categories

For warranty repairs, Product or Accessories must be returned with a copy of the Iridium issued RMA form. Iridium, at its option, shall at no charge to Purchaser either, repair, replace, or refund the wholesale purchase price of all Products or Accessories that do not conform to the *Iridium Pilot Products Terms and Conditions*.

If a Product or Accessories sold by Iridium is found to be faulty within the first one hundred twenty (120) days of use, it is considered to be an out-of-the-box failure. As such, the customer should contact their Service Provider to coordinate an RMA. The Service Provider will be responsible for all freight charges related to returning the unit for repair under warranty. Claim must be made within sixty (60) days of equipment failure. Out-of-the-box failures will be replaced with new Product(s) or Accessories.

Products or Accessories returned under warranty that are greater than one hundred twenty (120) days old from date of first use and within the warranty period, with proof of sale, may be replaced with factory refurbished Product(s) or Accessories. Replacement Product or Accessories will be warranted for the balance of the original warranty period, or six (6) months from shipment, whichever is greater. All Product(s) or Accessories must be returned to Iridium.

4. Accessories Under Warranty

Iridium Pilot accessories (“Accessories”) (i.e. cables, captain and crew handsets, mounts) are warranted for one (1) year from sale, with proof of sale.

To replace faulty Accessories, the customer should contact their Service Provider to request an RMA. Faulty Accessories are not required to be returned unless specifically requested by Iridium. A copy of the Iridium issued RMA form must be included with the material being returned. Material received by Iridium without an RMA will not be replaced under warranty and will be returned at the sender’s expense.

Warranty Returns

Iridium makes best efforts to provide an exchange of warranty claim units upon receipt of the defective equipment returned under Warranty RMA. Subject to inventory availability, equipment will be shipped within three (3) business days of RMA receipt.

Defective Products or Accessories covered under warranty shall be returned to Iridium by the Service Provider with freight, insurance, and customs duties/taxes prepaid via DDP (Deliver Duties Paid) Incoterms 2000.

Any storage fees related to clearance delays caused by insufficient information provided by the shipper will be charged to the shipper.

Replacement equipment will be returned to Service Provider via DDU (Deliver Duties Unpaid) Incoterms 2000. Iridium will be responsible for replacement shipment freight, less Duties/Taxes. Any storage fees related to clearance delays caused by insufficient information provided by the recipient will be charged to the recipient.

Following the assignment of an RMA by Iridium the customer may ship the faulty equipment directly to the Iridium Authorized Repair Center, per return address stated on Iridium issued RMA form. All Products or Accessories shipped from Iridium must be shipped to a Service Provider location. Return equipment can be delivered only to countries in which spectrum licenses for Iridium as well as equipment type approval or registration have been granted.

Out of Warranty Returns

All out of warranty returns shall be shipped to Iridium by the Service Provider. Repaired replacement equipment is returned by Iridium to Service Provider for return to the customer. Following the assignment of an RMA by Iridium, the Service Provider may direct their affiliate or customer to ship the damaged unit directly to an Iridium Authorized Repair Center, per return address stated on Iridium issued RMA form.

5. Warranty Void and Additional Rights

The Service Provider which facilitated the return of the Product(s) or Accessories will be provided with written or electronic notice no later than ninety (90) days after receipt of the returned Product(s) or Accessories that a charge will be applied for the replacement cost of the Product(s) or Accessories if the unit is subsequently found to have the warranty voided. Please note that acceptance of the replacement Product(s) or Accessories is an indication of acceptance of this policy. Reference the *Iridium Pilot Products Terms and Conditions*, Section 2, Exclusions for conditions that would void the limited warranty.

If you acquired this Product and Accessories in Australia or in New Zealand, the Product and Accessories come with guarantees that cannot be excluded under the Australian Consumer Law or similar legislation in New Zealand. Reference the *Iridium Pilot Products Terms and Conditions*, Section 1.

6. Administration

The Iridium Pilot Product Warranty Policy is administered by your Service Provider and/or Iridium.

Any warranty inquiries should be faxed or emailed to your Iridium Service Provider or your Point-of-Sale as described above. To identify a Service Provider in your area, please contact Iridium.

Iridium Contact Information

Iridium Satellite LLC
Attn: Iridium Warranty Administration

By Telephone Customer Service:

If in North America, Toll Free Number from a Land Line:
+1-866-947-4348

Otherwise or if Outside North America:
+1-480-752-5155

Facsimile:

+1.480.752.1105 facsimile

By email:

warranty@iridium.com
info@iridium.com

By Mail:

Iridium Satellite LLC
Attention: Customer Service, Warranty Claims
8440 South River Parkway
Tempe, AZ 85284 USA

This policy is subject to change by Iridium without notice.